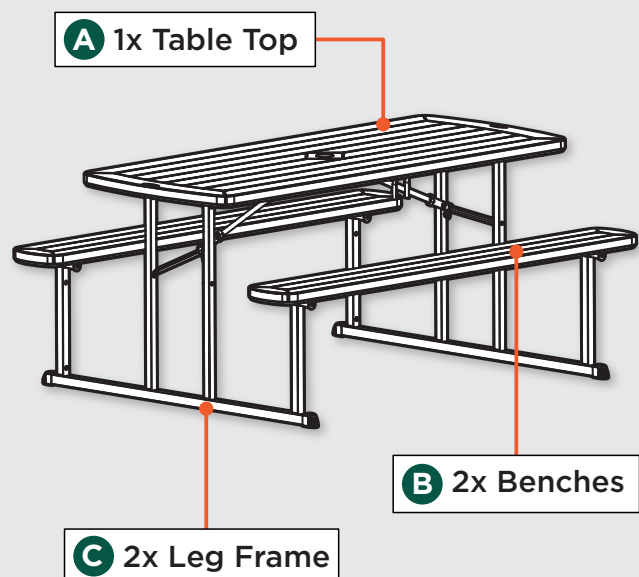


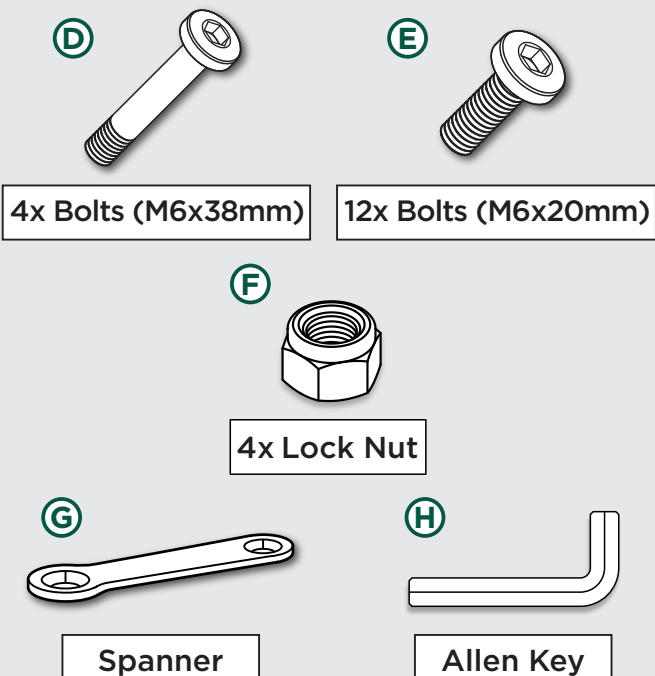
# ASSEMBLY INSTRUCTIONS

## BLOW MOLDED PICNIC TABLE BMPT SERIES

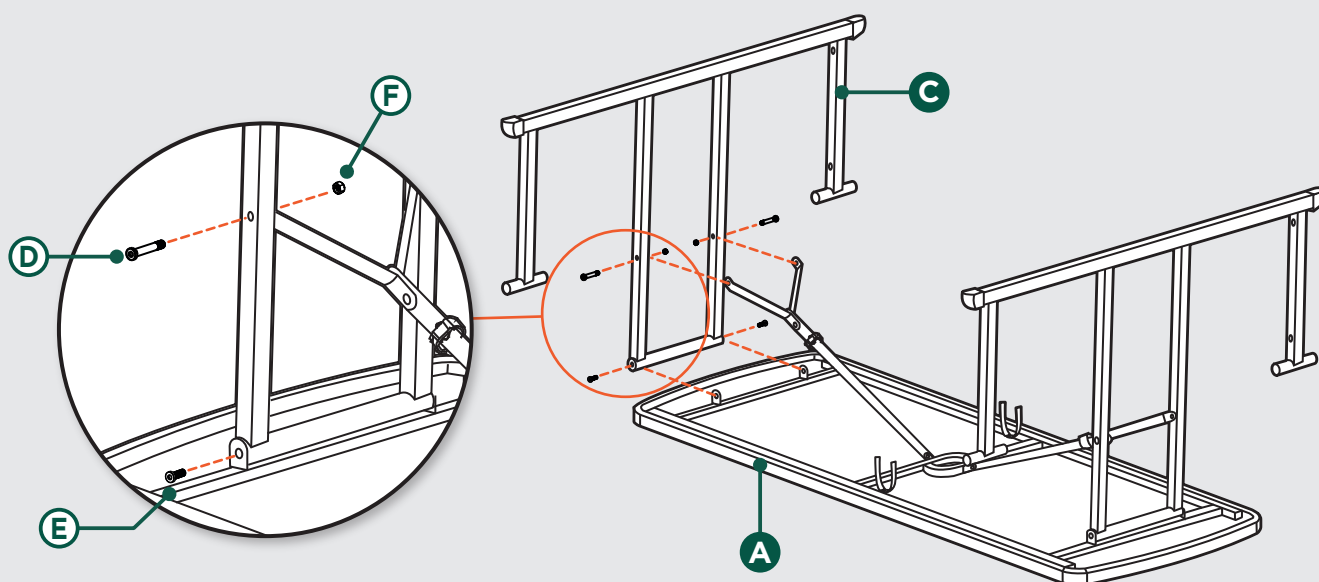
### TABLE COMPONENTS



### INCLUDED HARDWARE

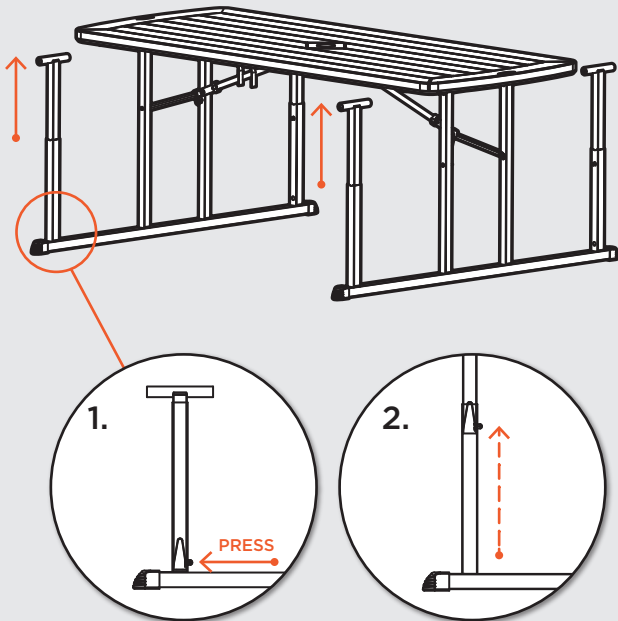


- 1 Place Table Top **A** upside down on a clean, dry, soft surface. Use Bolts **E**, Long Bolts **D** and Nuts **F** to attach Leg Frame **C** to Table Top, and lock into place. Turn Picnic Table upright after completed this step.

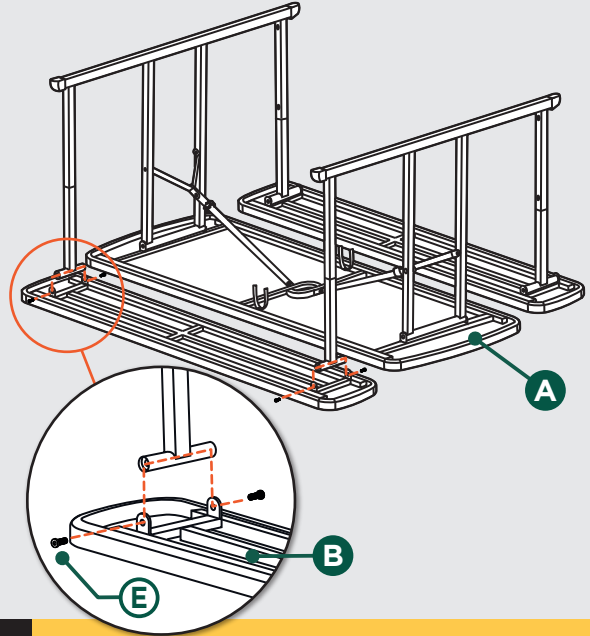


 **Ensure that all bolts are fastened tightly.**

- 2** Push the Button shown on Leg Tube and pull out the extension tube to lock into place.

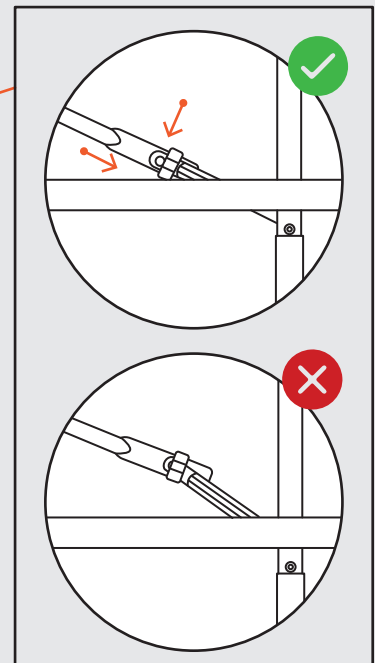
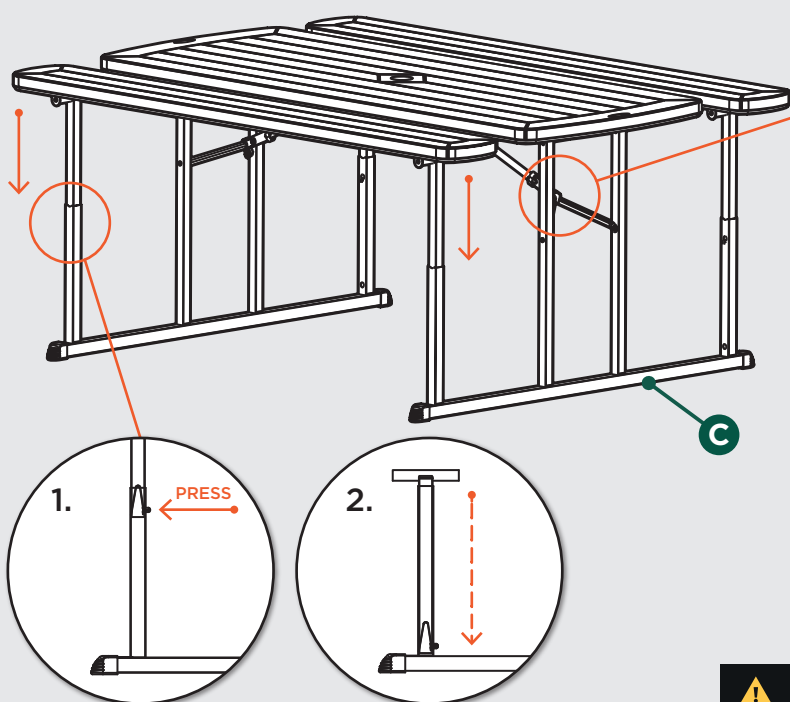


- 3** Turn the Table with Top **A** upside down, the use Bolts **E** to screw Bench Top **B** to extension Tube.



**!** Ensure that all bolts are fastened tightly.

- 4** Turn Table upright. Press the buttons as shown to raise the Leg Frame **C**  
**Attention: This step will require two people at the same time to lower bench's leg frame.**



**!** Lock ring must be locked in position.

**!** Double check all bolts to be tightened securely before use. Check all bolts periodically. Failure to completely tighten the bolts may result in tipping and possible injury!

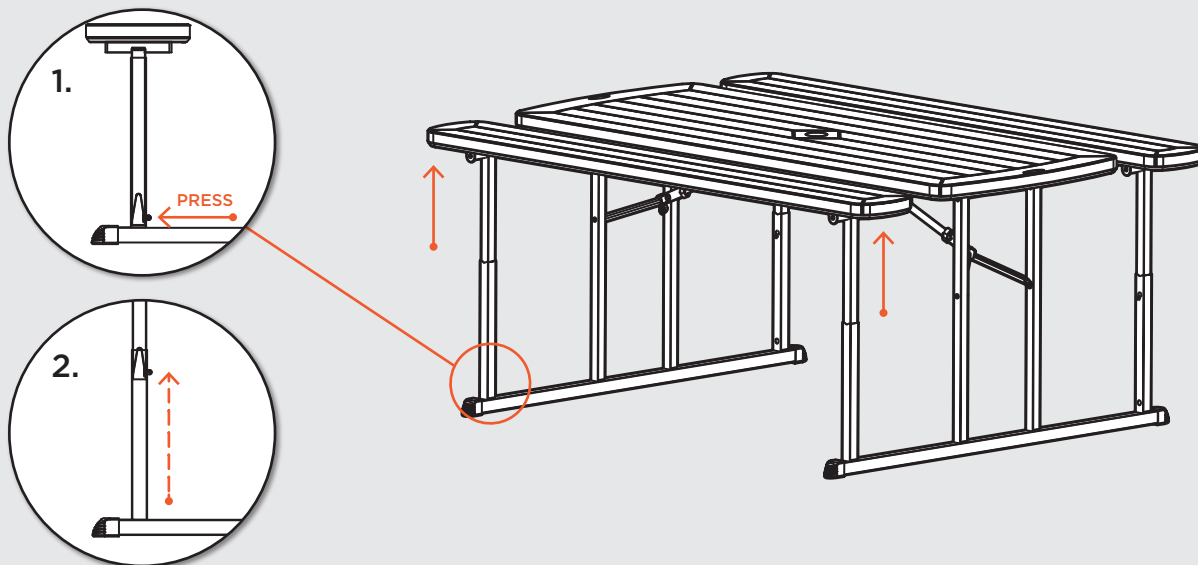
**Congratulations, your Picnic Table is now assembled and ready to be used!**

**Dear Customer,** Thank you for your purchase. Although extreme care goes into manufacturing & packaging of this product, mistakes are possible. If you encounter any missing parts or difficulty in assembly, please contact our customer service Toll Free at **1-800-261-4112** or **info@nationalpublicseating.com** for courteous & immediate resolution to your problem.

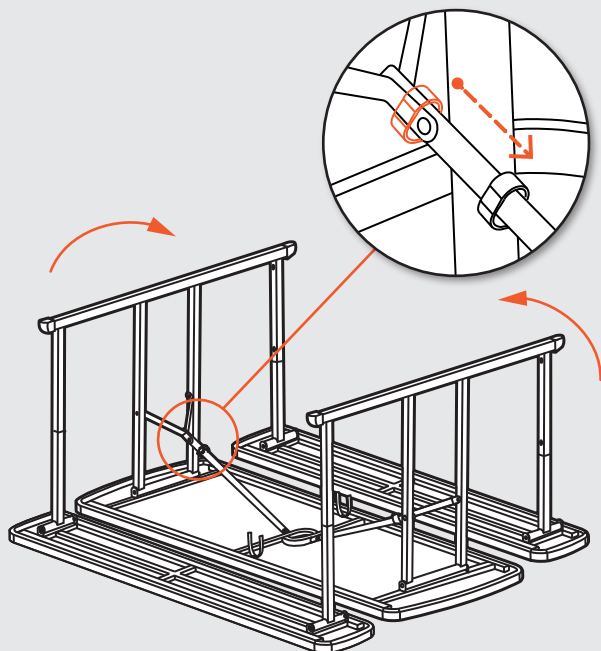
## FOLDING/UNFOLDING INSTRUCTIONS BLOW MOLDED PICNIC TABLE BMPT SERIES

### FOLDING THE TABLE FLAT FOR EASY STORAGE

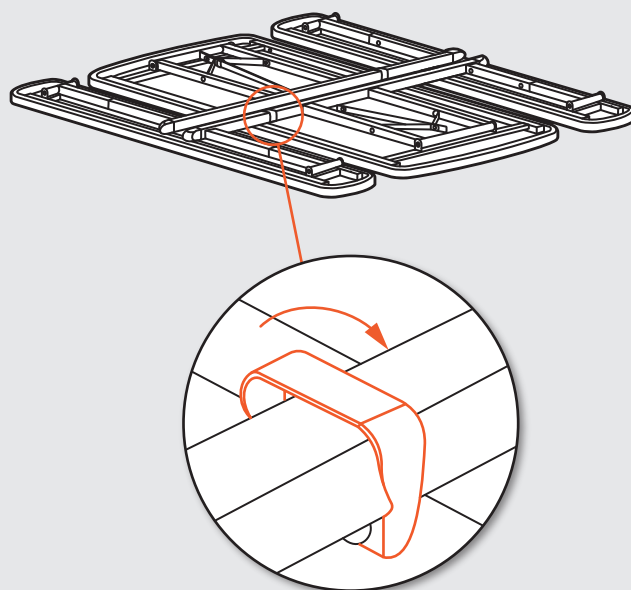
- 1 Press the buttons as shown to raise the leg frame. Legs need to be raised before folding.  
*Attention: This step will require two people at the same time to lift bench's leg frame.*



- 2 Turn table upside down. Release the safety lock as shown and then fold in leg frame.



- 3 Fasten the leg frame to the table top with the velcro straps.

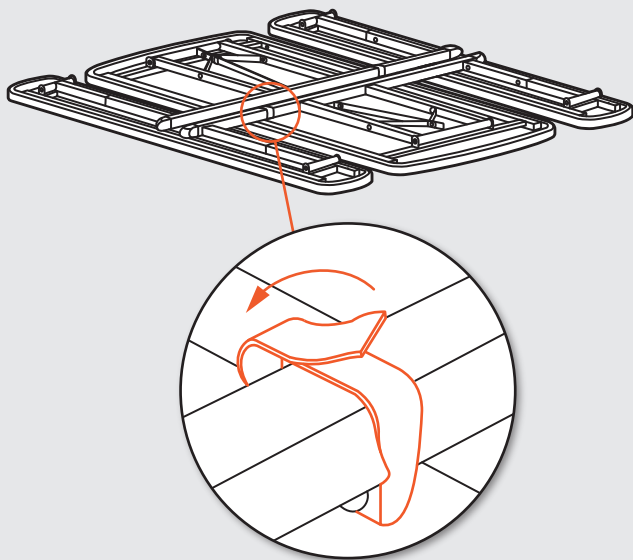


**Congratulations, your Picnic Table is now folded and ready to be stored!**

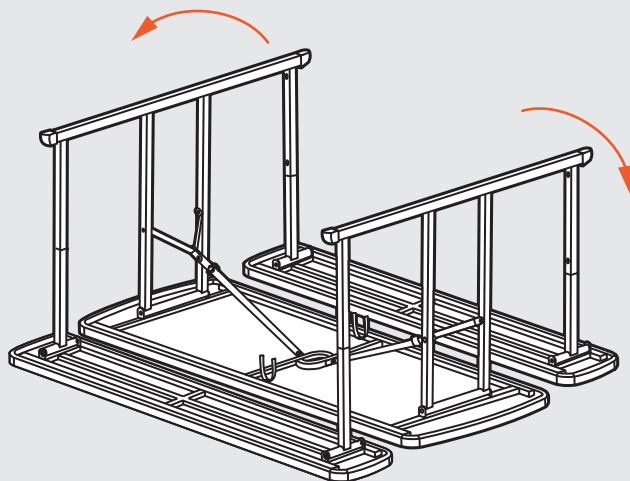
## FOLDING/UNFOLDING INSTRUCTIONS BLOW MOLDED PICNIC TABLE BMPT SERIES

### UNFOLDING THE TABLE

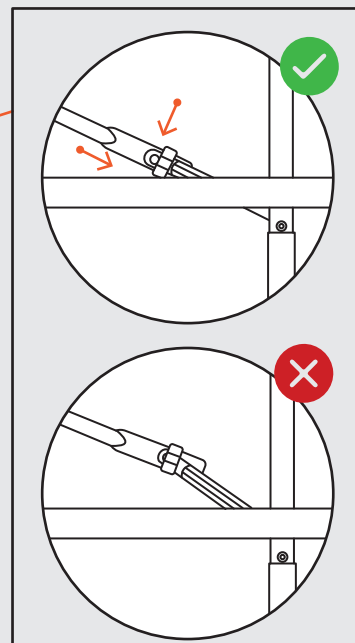
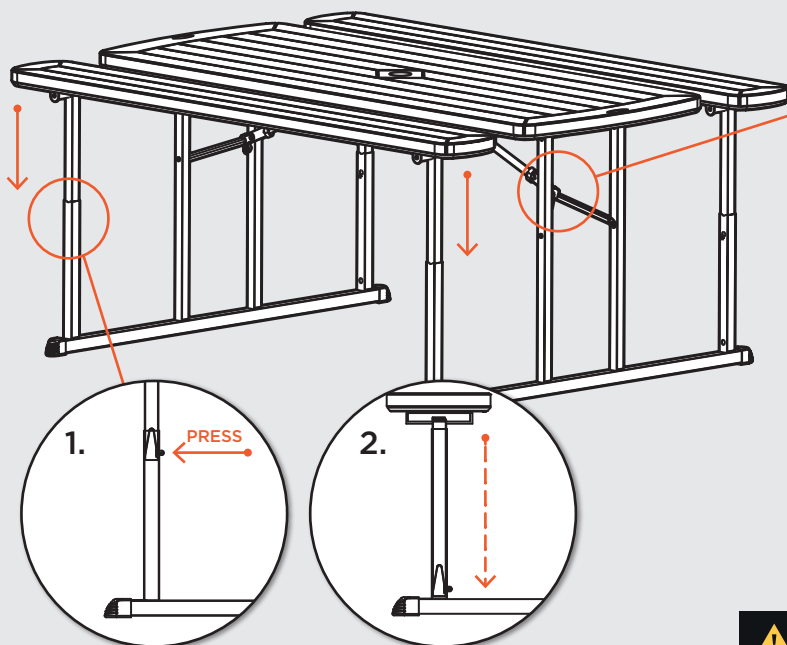
- 1 Place the table upside down. Unfasten the velcro straps.



- 2 Unfold Leg Frame as shown below.



- 3 Turn Table upright. Press the buttons as shown to lower the Leg Frame.  
**Attention: This step will require two people at the same time to lower bench's leg frame.**



**Lock ring must be locked in position.**

**Congratulations, your Picnic Table is now unfolded and ready to be used!**

**Dear Customer,** Thank you for your purchase. Although extreme care goes into manufacturing & packaging of this product, mistakes are possible. If you encounter any missing parts or difficulty in assembly, please contact our customer service Toll Free at **1-800-261-4112** or **info@nationalpublicseating.com** for courteous & immediate resolution to your problem.