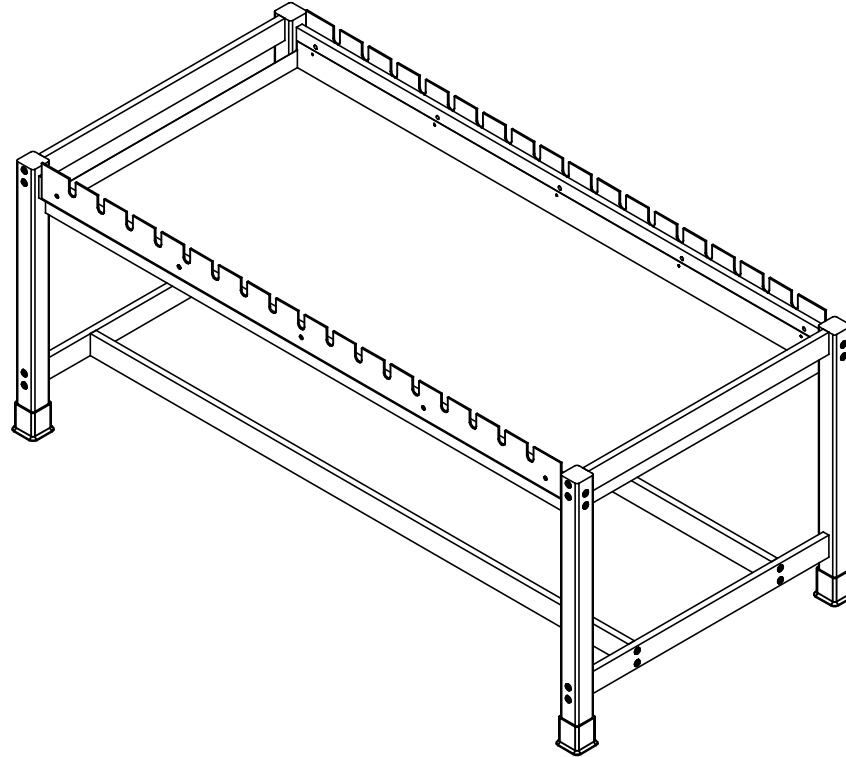


SIDE CLAMP GLUE BENCH

GCT SERIES TABLES ASSEMBLY INSTRUCTIONS



NOTE:

1. MODEL VIEWS MAY NOT REPRESENT EXACT MODEL PURCHASED

A	CREATED ASSEMBLY INSTRUCTIONS	12/1/14	EMR	-
REV.	DESCRIPTION	DATE	NAME	ECN NO.

REVISION LEVEL

ALL DIMENSIONS ARE IN INCHES UNLESS NOTED OTHERWISE	DWN BY:	EMR	DATE DWN:	12/1/14
DECIMALS: X = ± .030	APR BY:		DATE APR:	
XX = ± .020	APR BY:		DATE APR:	
XXX = ± .010	APR BY:		DATE APR:	
ANGLES: = ± 1°	APR BY:		DATE APR:	
CABINET SQUARENESS: = ± .0625	APR BY:		DATE APR:	

CONFIDENTIAL:
ALL DESIGN RIGHTS RESERVED
THE INFORMATION, DATA, DESIGN, AND DRAWINGS EMBODIED
IN THIS DOCUMENT AND ALL REPRODUCTIONS THEREOF ARE
THE EXCLUSIVE PROPERTY OF DIVERSIFIED WOODCRAFTS, INC.

THESE DOCUMENTS ARE SUPPLIED WITH THE UNDERSTANDING
THAT THEY WILL NOT BE DISCLOSED TO THIRD PARTIES WITHOUT
WRITTEN CONSENT OF DIVERSIFIED WOODCRAFTS, INC. ANY
REPRODUCTION IN PART OR WHOLE WITHOUT WRITTEN
CONSENT IS SUBJECT TO LEGAL ACTION.



300 South Krueger Street
Suring, WI 54174
diversifiedwoodcrafts.com

TITLE:
SIDE CLAMP GLUE BENCH
ASSEMBLY INSTRUCTIONS

DRAWING NUMBER:	SCALE:	SHEET:	REVISION:
GCT SERIES TABLES	NTS	1 OF 8	REV A

TOOLS REQUIRED

4MM ALLEN WRENCH

 $\frac{1}{8}$ " DRILL BIT**ASSEMBLY COMPONENTS**

ITEMS INCLUDED	PART #	PART DESCRIPTION	QTY
LEG ASSEMBLY	N/A	LEGS AND BRACE ASSEMBLY (FACTORY ASSEMBLED)	2
STRETCHER	N/A	STRETCHER - 70.50" LONG	2
TOP BRACE WITH STEEL PLATE	N/A	TOP BRACE AND STEEL PLATE ASSEMBLY (FACTORY ASSEMBLED)	2
LEG BOOT	100076	LEG BOOT,BLK RUBBER	4
LEG LEVELER	100079	LEG LEVELER,BLK BASE 1	4
CONFIRMATS - LEGS	227578	SCREW,7MMX90MM,CONN,ALLENHEAD, BLACK	4
CONFIRMATS - STRETCHER	228564	SCREW,7MMX50MM,CONN,ALLENHEAD, BLACK	4
DRIP PAN	15-0063	PANS - GALVANIZED DRIP	1
SCREWS - DRIP PAN	100111	SCREW, $\frac{5}{8}$ TRUSS HEAD	10

NOTE:

1. **XX** INDICATES ITEMS USED ONLY FOR A GCT-DP.

A	CREATED ASSEMBLY INSTRUCTIONS	12/1/14	EMR	-
REV.	DESCRIPTION	DATE	NAME	ECN NO.
REVISION LEVEL				

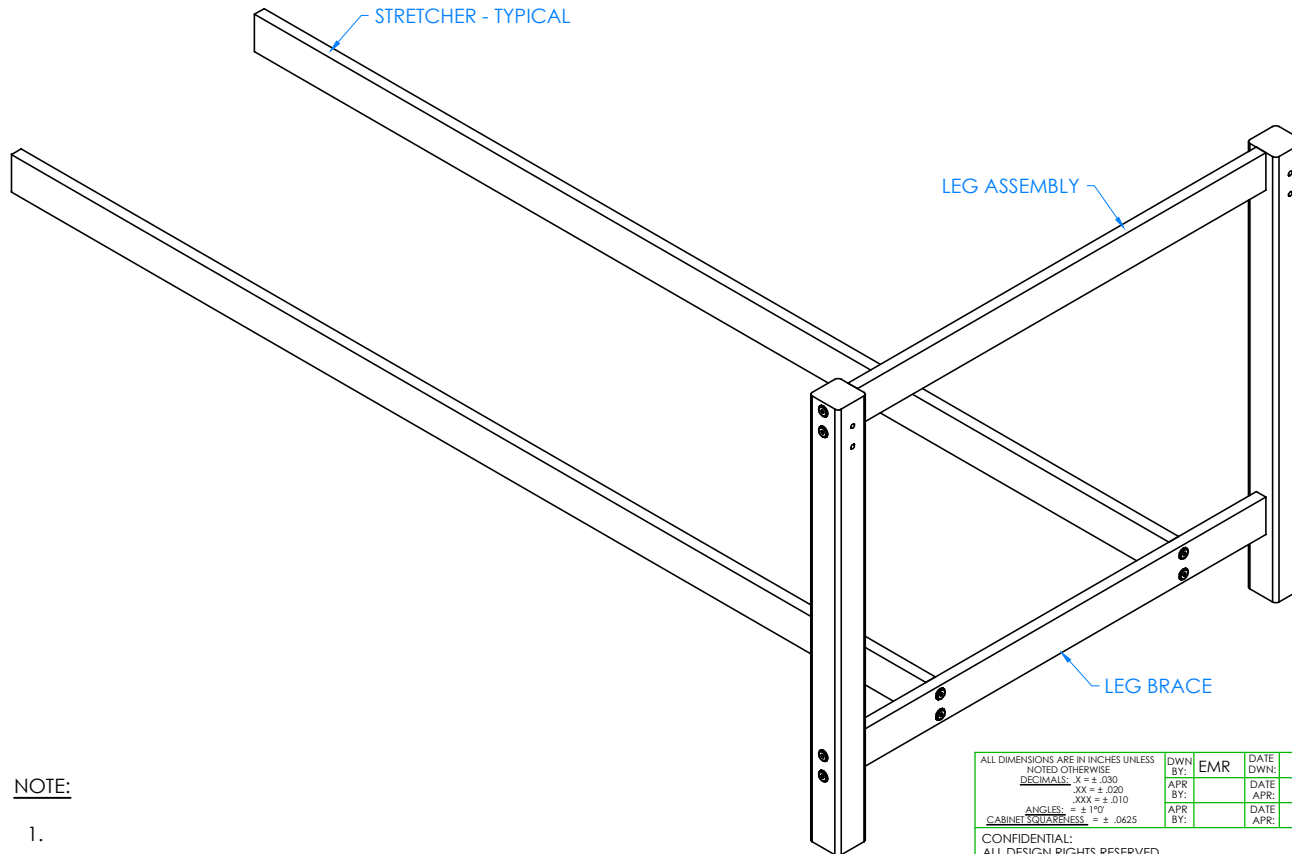
ALL DIMENSIONS ARE IN INCHES UNLESS NOTED OTHERWISE DECIMALS: .X = ± .030 .XX = ± .020 .XXX = ± .010 ANGLES: = ± 1° CABINET SQUARENESS: = ± .0625	DWN BY: EMR APR BY: APR BY:	DATE DWN: 12/1/14 DATE APR: DATE APR:
CONFIDENTIAL: ALL DESIGN RIGHTS RESERVED THE INFORMATION, DATA, DESIGN, AND DRAWINGS EMBODIED IN THIS DOCUMENT AND ALL REPRODUCTIONS THEREOF ARE THE EXCLUSIVE PROPERTY OF DIVERSIFIED WOODCRAFTS, INC.	THESE DOCUMENTS ARE SUPPLIED WITH THE UNDERSTANDING THAT THEY WILL NOT BE DISCLOSED TO THIRD PARTIES WITHOUT WRITTEN CONSENT OF DIVERSIFIED WOODCRAFTS, INC. ANY REPRODUCTION IN PART OR WHOLE WITHOUT WRITTEN CONSENT IS SUBJECT TO LEGAL ACTION.	



300 South Krueger Street
Suring, WI 54174
diversifiedwoodcrafts.com

TITLE:
SIDE CLAMP GLUE BENCH
TOOLS AND ASSEMBLY COMPONENTS

DRAWING NUMBER:	SCALE:	SHEET:	REVISION:
GCT SERIES TABLES	NTS	2 OF 8	REV A



STEP 1:

- ATTACH STRETCHERS TO LEG BRACES LOCATED ON ONE OF THE LEG ASSEMBLIES WITH HARDWARE PROVIDED.

NOTE:

1.

ALL DIMENSIONS ARE IN INCHES UNLESS NOTED OTHERWISE
 DECIMALS: $\frac{1}{8} = \pm .030$
 $\frac{1}{4} = \pm .020$
 $\frac{3}{8} = \pm .010$
 ANGLES: $90^\circ = \pm 1^\circ$
 CABINET SQUARENESS: $= \pm .0625$

DWN BY:	EMR	DATE DWN:	12/1/14
APR BY:		DATE APR:	
APR BY:		DATE APR:	

CONFIDENTIAL:
 ALL DESIGN RIGHTS RESERVED
 THE INFORMATION, DATA, DESIGN, AND DRAWINGS EMBODIED IN THIS DOCUMENT AND ALL REPRODUCTIONS THEREOF ARE THE EXCLUSIVE PROPERTY OF DIVERSIFIED WOODCRAFTS, INC.

THESE DOCUMENTS ARE SUPPLIED WITH THE UNDERSTANDING THAT THEY WILL NOT BE DISCLOSED TO THIRD PARTIES WITHOUT WRITTEN CONSENT OF DIVERSIFIED WOODCRAFTS, INC. ANY REPRODUCTION IN PART OR WHOLE WITHOUT WRITTEN CONSENT IS SUBJECT TO LEGAL ACTION.

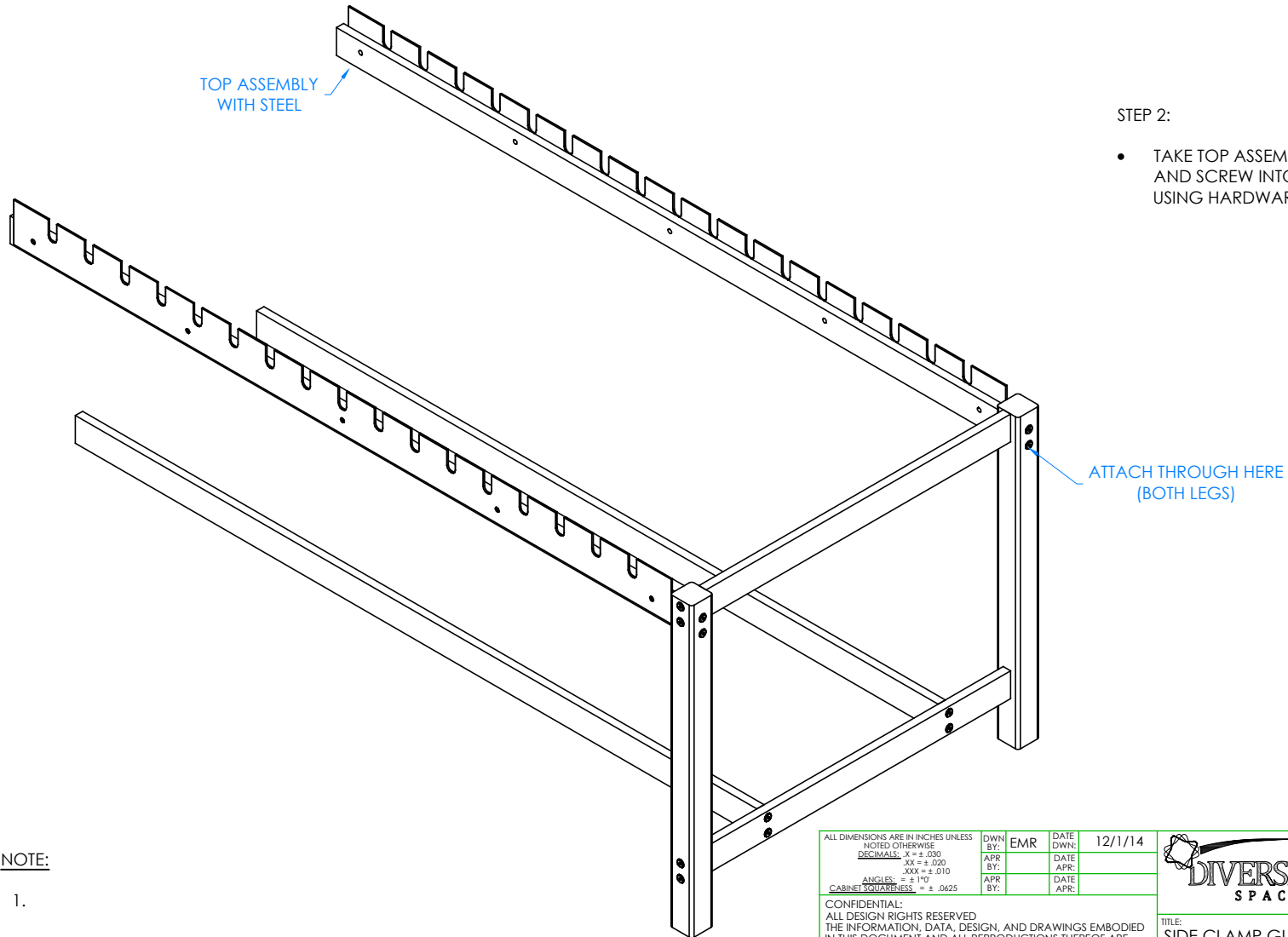


300 South Krueger Street
 Suring, WI 54174
diversifiedwoodcrafts.com

TITLE:
 SIDE CLAMP GLUE BENCH
 ASSEMBLY INSTRUCTIONS

A	CREATED ASSEMBLY INSTRUCTIONS	12/1/14	EMR	-
REV.	DESCRIPTION	DATE	NAME	ECN NO.
REVISION LEVEL				

DRAWING NUMBER:	SCALE:	SHEET:	REVISION:
GCT SERIES TABLES	NTS	3 OF 8	REV A



STEP 2:

- TAKE TOP ASSEMBLIES WITH STEEL ATTACHED TO THEM AND SCREW INTO LEGS OF THE SAME LEG ASSEMBLY USING HARDWARE PROVIDED.

NOTE:

1.

ALL DIMENSIONS ARE IN INCHES UNLESS NOTED OTHERWISE	DWN BY:	EMR	DATE DWN:	12/1/14
DECIMALS: $\frac{1}{16} = \pm .030$	APR BY:		DATE APR:	
XX = $\pm .020$	APR BY:		DATE APR:	
XXX = $\pm .010$	APR BY:		DATE APR:	
ANGLES: $\pm 1^\circ$	APR BY:		DATE APR:	
CABINET SQUARENESS: $\pm .0625$	APR BY:		DATE APR:	

CONFIDENTIAL:
ALL DESIGN RIGHTS RESERVED
THE INFORMATION, DATA, DESIGN, AND DRAWINGS EMBODIED IN THIS DOCUMENT AND ALL REPRODUCTIONS THEREOF ARE THE EXCLUSIVE PROPERTY OF DIVERSIFIED WOODCRAFTS, INC.

THESE DOCUMENTS ARE SUPPLIED WITH THE UNDERSTANDING THAT THEY WILL NOT BE DISCLOSED TO THIRD PARTIES WITHOUT WRITTEN CONSENT OF DIVERSIFIED WOODCRAFTS, INC. ANY REPRODUCTION IN PART OR WHOLE WITHOUT WRITTEN CONSENT IS SUBJECT TO LEGAL ACTION.



300 South Krueger Street
Suring, WI 54174
diversifiedwoodcrafts.com

TITLE:
SIDE CLAMP GLUE BENCH
ASSEMBLY INSTRUCTIONS

A	CREATED ASSEMBLY INSTRUCTIONS	12/1/14	EMR	-
REV.	DESCRIPTION	DATE	NAME	ECN NO.

REVISION LEVEL

DRAWING NUMBER:

GCT SERIES TABLES

SCALE:

NTS

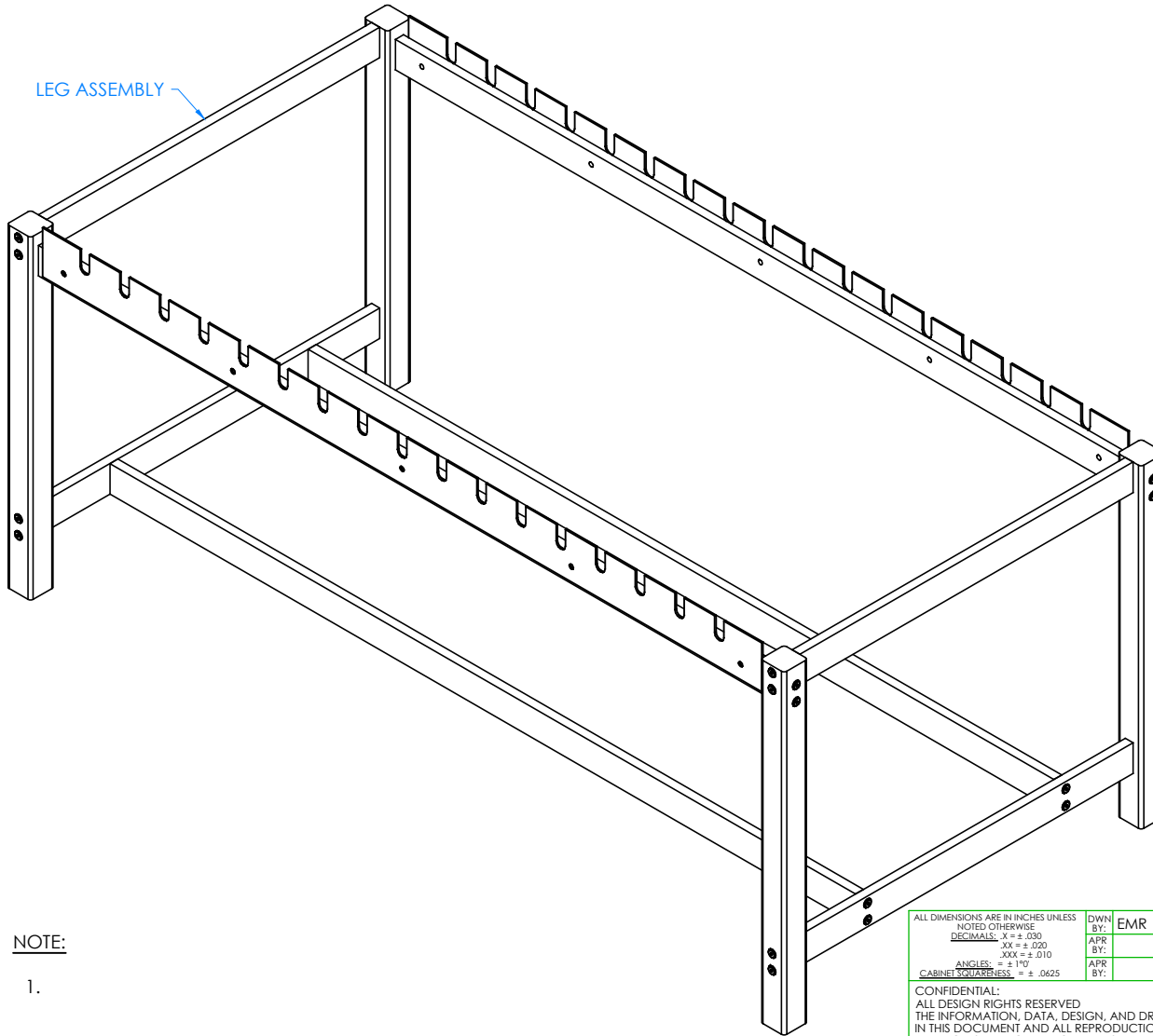
SHEET:

4 OF 8

REVISION:

REV A

LEG ASSEMBLY



STEP 3:

- PLACE OTHER LEG ASSEMBLY ON OTHER SIDE OF TABLE.
- ALIGN HOLES ON THE STRETCHERS TO LEG BRACE AND THE HOLES FOR EACH TOP ASSEMBLY TO LEGS.
- ATTACH WITH THE REST OF THE CONFIRMATS PROVIDED.

NOTE:

1.

ALL DIMENSIONS ARE IN INCHES UNLESS NOTED OTHERWISE
 DECIMALS: $\frac{1}{8}$ = $\pm .030$
 $\frac{1}{4}$ = $\pm .020$
 $\frac{3}{8}$ = $\pm .010$
 ANGLES: $\pm 1^\circ$
 CABINET SQUARENESS: $\pm .0625$

DWN BY:	EMR	DATE DWN:	12/1/14
APR BY:		DATE APR:	
APR BY:		DATE APR:	

CONFIDENTIAL:
 ALL DESIGN RIGHTS RESERVED
 THE INFORMATION, DATA, DESIGN, AND DRAWINGS EMBODIED IN THIS DOCUMENT AND ALL REPRODUCTIONS THEREOF ARE THE EXCLUSIVE PROPERTY OF DIVERSIFIED WOODCRAFTS, INC.

THESE DOCUMENTS ARE SUPPLIED WITH THE UNDERSTANDING THAT THEY WILL NOT BE DISCLOSED TO THIRD PARTIES WITHOUT WRITTEN CONSENT OF DIVERSIFIED WOODCRAFTS, INC. ANY REPRODUCTION IN PART OR WHOLE WITHOUT WRITTEN CONSENT IS SUBJECT TO LEGAL ACTION.



300 South Krueger Street
 Suring, WI 54174
diversifiedwoodcrafts.com

TITLE:
 SIDE CLAMP GLUE BENCH
 ASSEMBLY INSTRUCTIONS

DRAWING NUMBER:

GCT SERIES TABLES

SCALE:

NTS

SHEET:

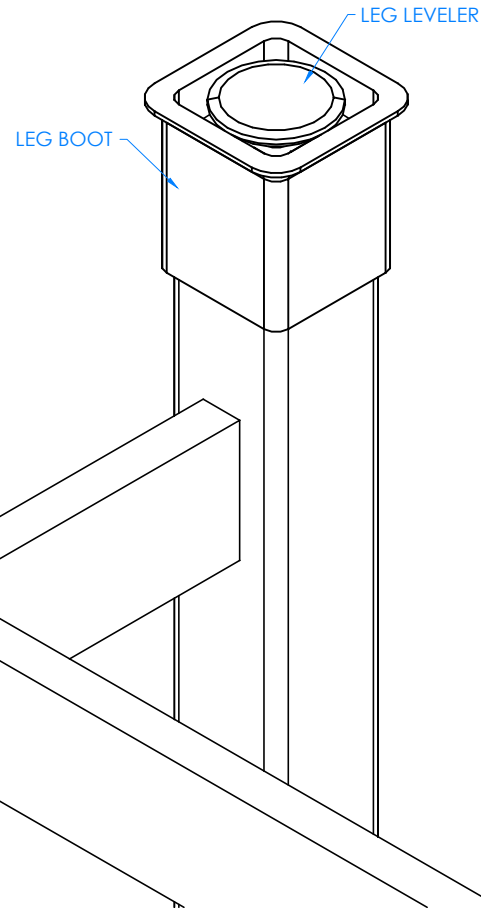
5 OF 8

REVISION:

REV A

A	CREATED ASSEMBLY INSTRUCTIONS	12/1/14	EMR	-
REV.	DESCRIPTION	DATE	NAME	ECN NO.

REVISION LEVEL

CLOSE UP OF LEG LEVELER AND LEG BOOT
ASSEMBLY SHOWNNOTE:

1.

STEP 4:

- WITH HELP FROM ANOTHER PERSON, CAREFULLY TIP TABLE UPSIDE DOWN.
- SLIDE LEG BOOTS ONTO LEGS WITH FLARED END TOWARDS BOTTOM OF LEG.
- SCREW LEG LEVELERS INTO T-NUT ON BOTTOM OF LEGS.

ALL DIMENSIONS ARE IN INCHES UNLESS NOTED OTHERWISE	DWN BY:	EMR	DATE DWN:	12/1/14
DECIMALS: $\frac{1}{16}$ = $\pm .030$	APR BY:		DATE APR:	
XX = $\pm .020$	APR BY:		DATE APR:	
XXX = $\pm .010$	APR BY:		DATE APR:	
ANGLES: $\pm 1^\circ$	APR BY:		DATE APR:	
CABINET SQUARENESS: $\pm .0625$	APR BY:		DATE APR:	

CONFIDENTIAL:
ALL DESIGN RIGHTS RESERVED
THE INFORMATION, DATA, DESIGN, AND DRAWINGS EMBODIED IN THIS DOCUMENT AND ALL REPRODUCTIONS THEREOF ARE THE EXCLUSIVE PROPERTY OF DIVERSIFIED WOODCRAFTS, INC.

THESE DOCUMENTS ARE SUPPLIED WITH THE UNDERSTANDING THAT THEY WILL NOT BE DISCLOSED TO THIRD PARTIES WITHOUT WRITTEN CONSENT OF DIVERSIFIED WOODCRAFTS, INC. ANY REPRODUCTION IN PART OR WHOLE WITHOUT WRITTEN CONSENT IS SUBJECT TO LEGAL ACTION.



300 South Krueger Street
Suring, WI 54174
diversifiedwoodcrafts.com

TITLE:
SIDE CLAMP GLUE BENCH
ASSEMBLY INSTRUCTIONS

REV.	DESCRIPTION	DATE	NAME	ECN NO.
A	CREATED ASSEMBLY INSTRUCTIONS	12/1/14	EMR	-

REVISION LEVEL

DRAWING NUMBER:

GCT SERIES TABLES

SCALE:

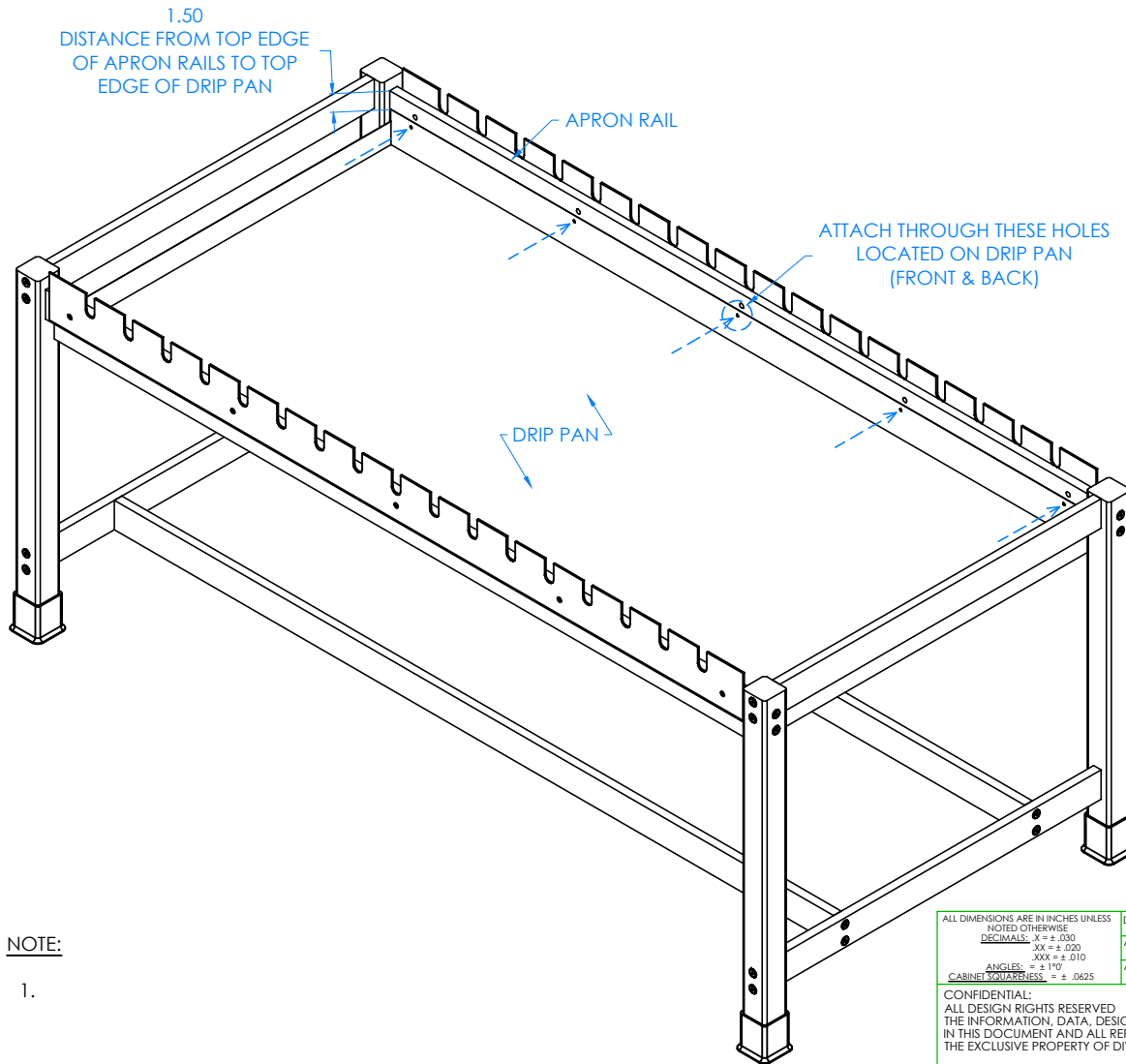
NTS

SHEET:

6 OF 8

REVISION:

REV A



STEP 5:

- TURN TABLE BACK OVER SO TOP IS UP.
- IF YOUR TABLE DOES NOT HAVE A DRIIP PAN, SKIP TO STEP 6.
- PLACE DRIIP PAN IN CENTER OF TABLE AND 1.50" DOWN FROM TOP EDGE OF APRON RAILS.
- HOLD IN POSITION AND SCREW DRIIP PAN INTO BOTH TOP ASSEMBLIES WITH HARDWARE PROVIDED.
- PRE-DRILL HOLES IN DRIIP PAN AND IN APRON RAILS (THIS IS TO PREVENT CRACKING IN RAILS AND EASIER INSTALLATION FOR DRIIP PAN).

NOTE:

1.

ALL DIMENSIONS ARE IN INCHES UNLESS NOTED OTHERWISE
 DECIMALS: .X = ± .030
 .XX = ± .020
 .XXX = ± .010
 ANGLES: = ± 1°
 CABINET SQUARENESS = ± .0625

DWN BY:	EMR	DATE DWN:	12/1/14
APR BY:		DATE APR:	
APR BY:		DATE APR:	

CONFIDENTIAL:
 ALL DESIGN RIGHTS RESERVED
 THE INFORMATION, DATA, DESIGN, AND DRAWINGS EMBODIED IN THIS DOCUMENT AND ALL REPRODUCTIONS THEREOF ARE THE EXCLUSIVE PROPERTY OF DIVERSIFIED WOODCRAFTS, INC.

THESE DOCUMENTS ARE SUPPLIED WITH THE UNDERSTANDING THAT THEY WILL NOT BE DISCLOSED TO THIRD PARTIES WITHOUT WRITTEN CONSENT OF DIVERSIFIED WOODCRAFTS, INC. ANY REPRODUCTION IN PART OR WHOLE WITHOUT WRITTEN CONSENT IS SUBJECT TO LEGAL ACTION.

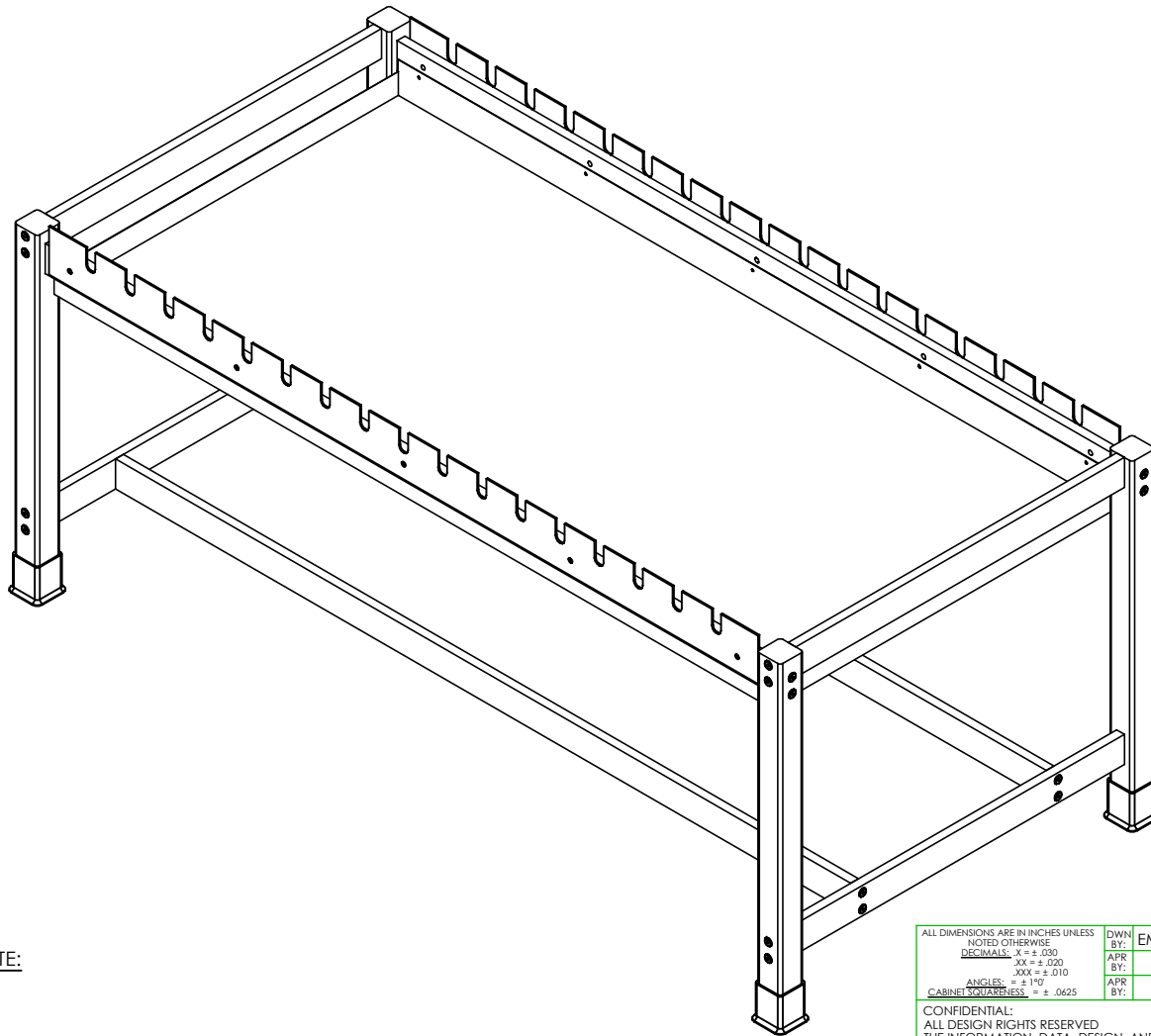


300 South Krueger Street
 Suring, WI 54174
diversifiedwoodcrafts.com

TITLE:
 SIDE CLAMP GLUE BENCH
 ASSEMBLY INSTRUCTIONS

A	CREATED ASSEMBLY INSTRUCTIONS	12/1/14	EMR	-
REV.	DESCRIPTION	DATE	NAME	ECN NO.
REVISION LEVEL				

DRAWING NUMBER:	SCALE:	SHEET:	REVISION:
GCT SERIES TABLES	NTS	7 OF 8	REV A



STEP 6:

- SET YOUR TABLE IN PLACE.
- ADJUST LEG LEVELERS TO LEVEL TABLE.
- SLIDE LEG BOOTS DOWN TO FLOOR.

NOTE:

1.

COMPLETE UNIT SHOWN

A	CREATED ASSEMBLY INSTRUCTIONS	12/1/14	EMR	-
REV.	DESCRIPTION	DATE	NAME	ECN NO.
REVISION LEVEL				

ALL DIMENSIONS ARE IN INCHES UNLESS NOTED OTHERWISE	DWN BY:	EMR	DATE DWN:	12/1/14
DECIMALS: X = ± .030	APR BY:		DATE APR:	
XX = ± .020				
XXX = ± .010	APR BY:		DATE APR:	
ANGLES: = ± 1°0'				
CABINET SQUARENESS: = ± .0625				

CONFIDENTIAL:
ALL DESIGN RIGHTS RESERVED
THE INFORMATION, DATA, DESIGN, AND DRAWINGS EMBODIED
IN THIS DOCUMENT AND ALL REPRODUCTIONS THEREOF ARE
THE EXCLUSIVE PROPERTY OF DIVERSIFIED WOODCRAFTS, INC.

THESE DOCUMENTS ARE SUPPLIED WITH THE UNDERSTANDING THAT THEY WILL NOT BE DISCLOSED TO THIRD PARTIES WITHOUT WRITTEN CONSENT OF DIVERSIFIED WOODCRAFTS, INC. ANY REPRODUCTION IN PART OR WHOLE WITHOUT WRITTEN CONSENT IS SUBJECT TO LEGAL ACTION.

DWN BY:	EMR	DATE DWN:	12/1/14
APR BY:		DATE APR:	
APR BY:		DATE APR:	



300 South Krueger Street
Suring, WI 54174
diversifiedwoodcrafts.com

TITLE:
SIDE CLAMP GLUE BENCH
ASSEMBLY INSTRUCTIONS

DRAWING NUMBER:

GCT SERIES TABLES

SCALE:

SHEET:

REVISION: