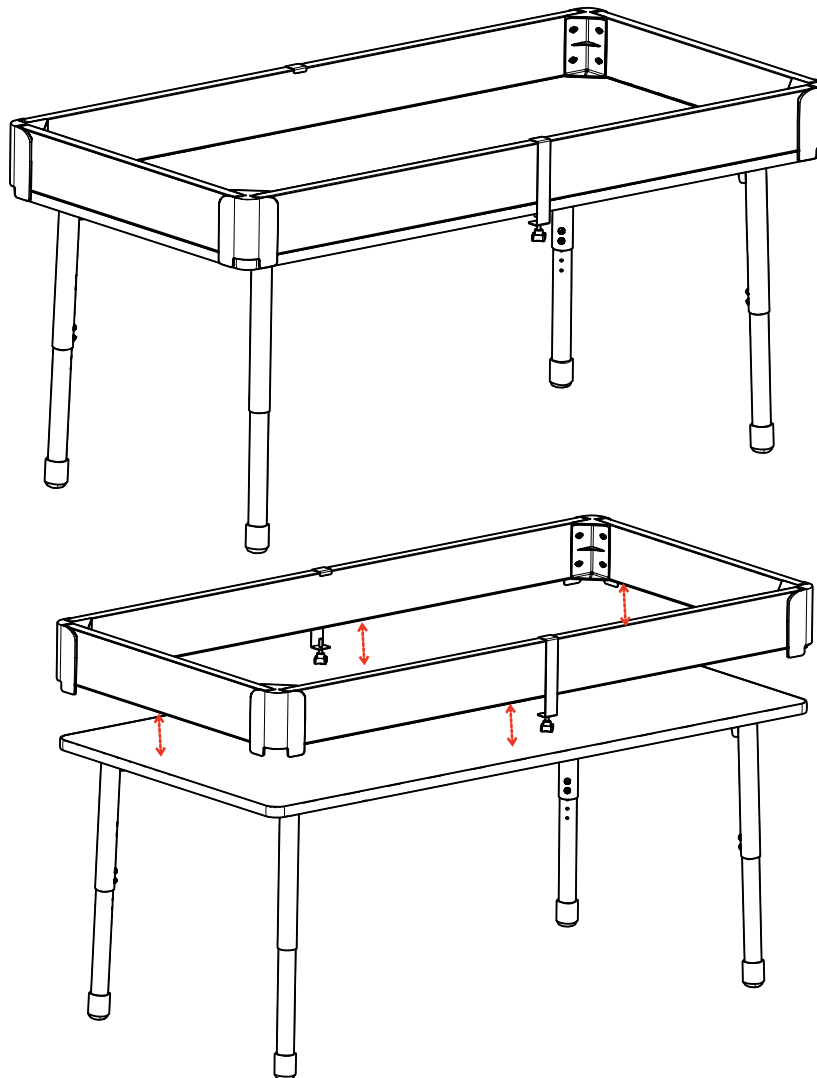


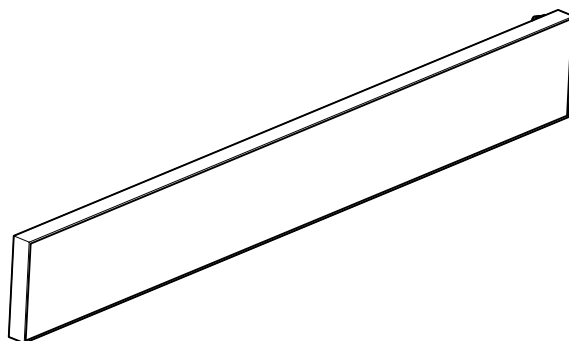
Classroom Select® Project Bumper Frame

ASSEMBLY INSTRUCTIONS

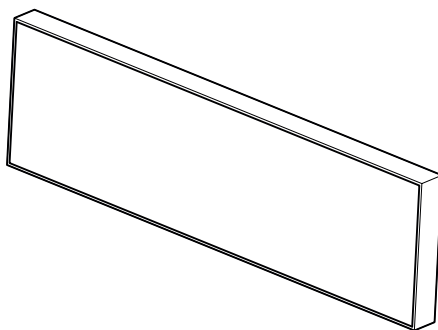
Thank you for purchasing Classroom Select® Project Bumper Frame from School Specialty®. Please review the enclosed packing list to ensure all components are included and read the instructions carefully before you begin assembly. If you find anything missing or have any questions now or after set-up, please contact Customer Care at 888.388.3224 or customercare.schoolspecialty.com/contact-us-email.



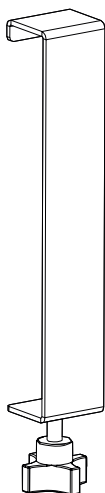
PART AND TOOLS LIST



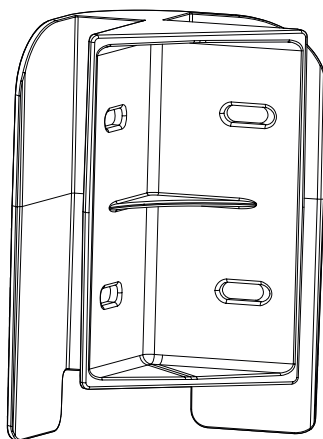
Long Laminate
Quantity: 2



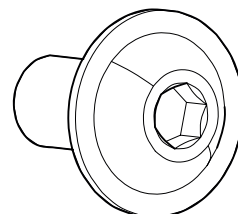
Short Laminate
Quantity: 2



Clamp
Quantity: 2



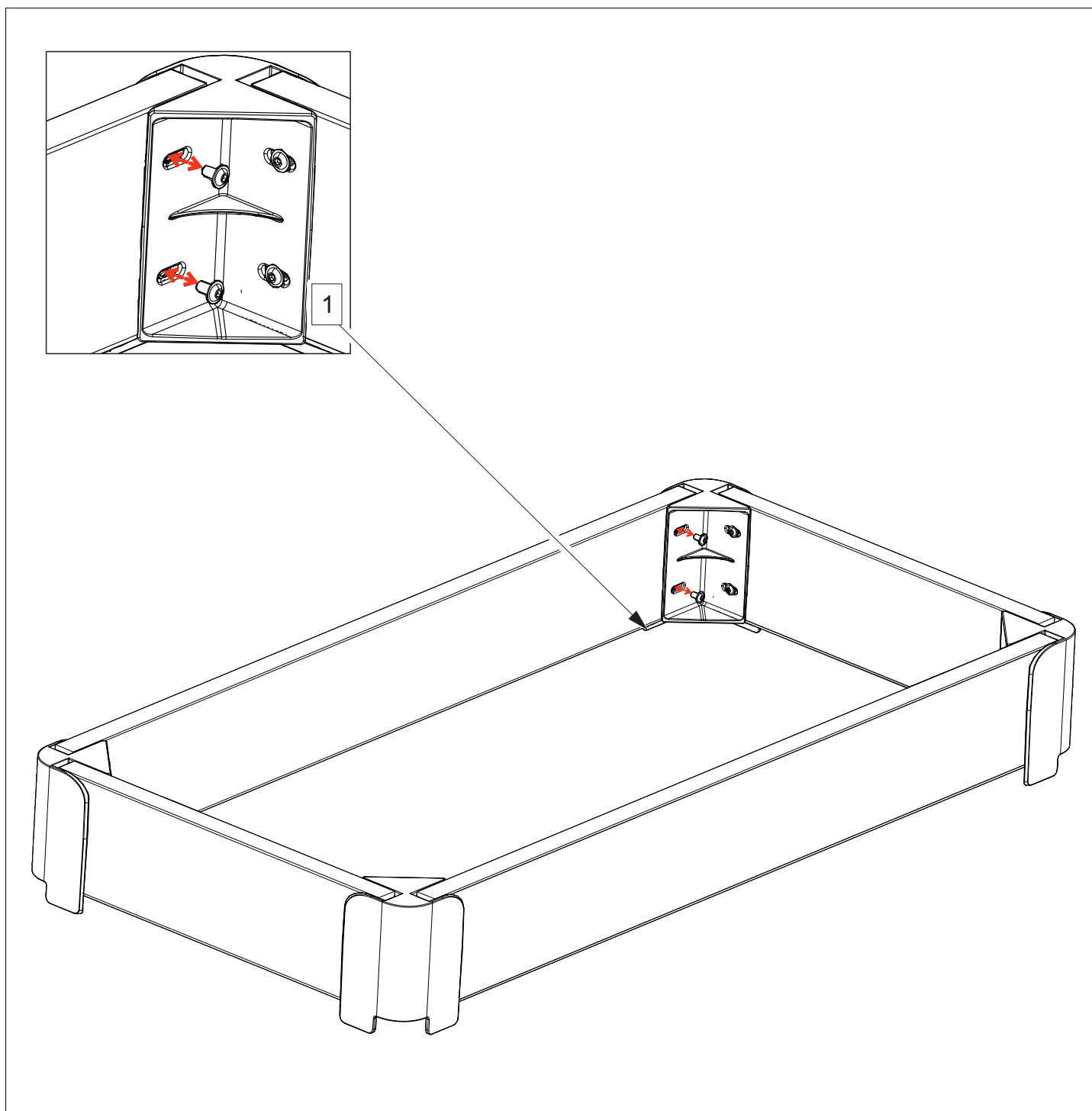
Brackets
Quantity: 4



Bracket Screws
Quantity: 16

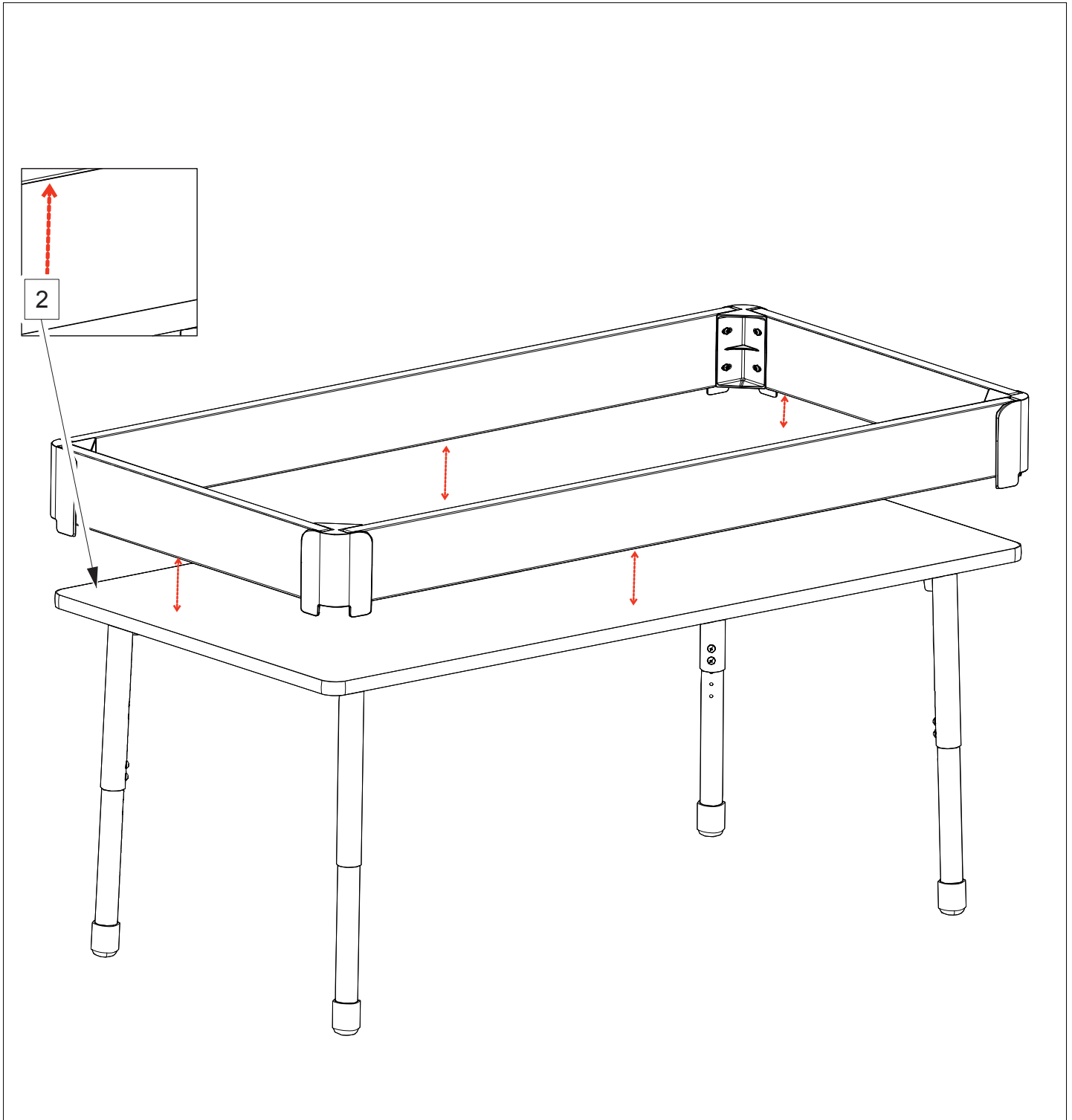
STEP 1

The first step of installation is to lay everything on a stable, non-abrasive soft surface to avoid any scratching. Then using the provided brackets, place the long laminate and the short laminate pieces into the bracket slots. Using the provided bracket screws, screw in the laminate pieces until the screws are tightly fastened.



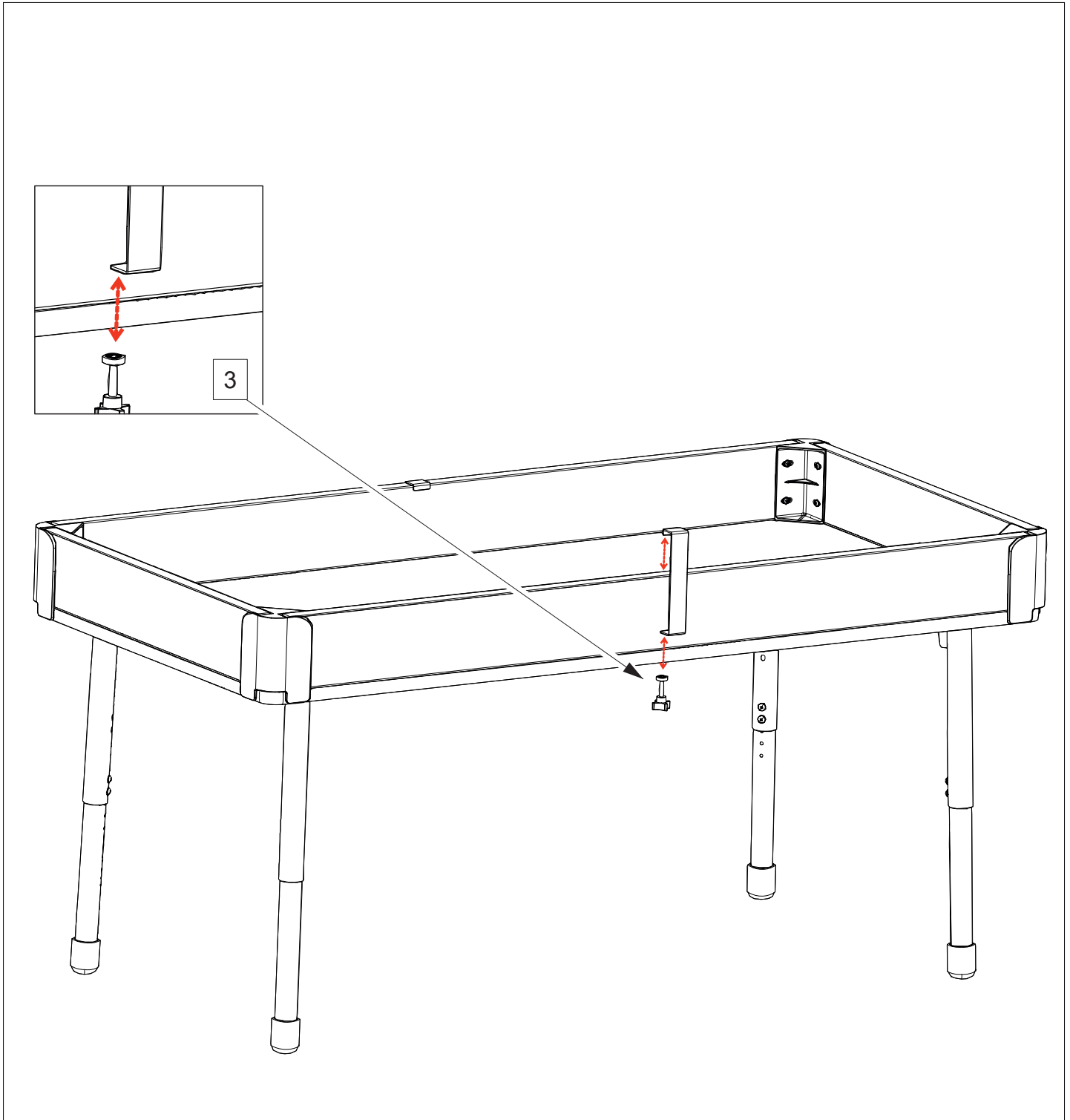
STEP 2

Next step would be with the help of another person, pickup the bumper frame and set on the desired table like shown in the figure below.



STEP 3

As shown in figure 3, place the clamp between the bumper frame and the underside of the table, and tighten until clamp is secure.



DISCLAIMERS

Please review the enclosed packing list to ensure all components are included. Please read the instructions carefully before you begin assembly. If you find anything missing or have any questions now or after set-up, please contact Customer Care at 888.388.3224 or customercare.schoolspecialty.com/contact-us-email.

Heavy or large furniture may require two or more people for proper assembly. Improper assembly may void the warranty. Ensure all hardware is correctly installed and screws are fully tightened before use. Recheck and tighten screws at least once per year. Failure to assemble or secure parts properly may result in product failure or personal injury.

The products illustrated/photographed in this assembly instruction may vary slightly from the actual product.

Product Warranty: help.schoolspecialty.com/s/article/Product-Warranties