

# SNOEZELLEN® BALLS-IN-BUBBLE TUBE

Item#'s 2123704 70" (175 cm), 2123703 80" (200 cm)

---

## INSTRUCTION MANUAL



PRODUCT DESCRIPTION .....	3
CONTENTS.....	3
SNOEZELEN® STIMULATIONS .....	4
BEST USE .....	4
COMPATIBLE SNOEZELEN® PRODUCTS.....	4
TECHNICAL SPECIFICATION .....	5
INSTALLATION .....	5-10
CARE & MAINTENANCE.....	11-13
TROUBLESHOOTING.....	14-15
BUBBLE TUBE VOLUMES & WEIGHTS.....	15

## PRODUCT DESCRIPTION

---

Bubbles of air propel the multi-colored balls to the top of the tube. They float gently down again to start their journey once more. This multi-sensory Bubble Tube by SNOEZELEN® can be used non-interactively and interactively, including wirelessly. Available in 2 heights, with changing colors.

### **There are essentially three options when using your bubble tube:**

1. Allow your Bubble Tube to function passively – that the eight colors will change in sequence.
2. Use a Snoezelen Interactive Controller to control the bubbles and the 4 colors – red, blue, green and yellow. Please see [www.schoolspecialty.com](http://www.schoolspecialty.com) for details of this – 2119933.
3. Use a Snoezelen® Wi-Fi controller to remotely control the Bubble Tube, such as the Talking Cube, Snoezelen WiFi Wireless Controller, or Color Command Panel. When used in conjunction with Snoezelen® Wi-Fi products, the Bubble Tube will be lit in the color chosen by the user. These controllers allow a choice of up to 8 colors to be selected

### **Always supervise the use of this product.**

- Please check the equipment immediately for any damage that may have resulted during shipping and contact School Specialty immediately if there are any problems.
- The layout of the area, proper installation and maintenance of your equipment is critical; make sure the product is used in a safe and appropriate place and way.
- Do not attempt to move the Bubble Tube while filled with water.
- Please ensure that no water contacts the circuit boards in the base of the Bubble Tube.
- Take extreme care when filling/emptying the Bubble Tube to ensure the electronics remain dry.
- Always disconnect the power cables when filling/emptying the Bubble Tube
- The Maxi Bubble Tube is suitable for use on a level floor.
- Do not insert anything into the bubble tube base other than the power supply provided and an Interactive Switch Box.

## CONTENTS

---

- Base Cover (white plastic cover)
  - Base Unit (chassis)
  - Bubble Tube Column
  - Bubble Tube Lid
  - Package of Balls
  - Power Supply (black box)
  - Drainage hose
-

## SNOEZELEN® STIMULATIONS

---

- Touch
- Sight
- Sound

## BEST USE

---

For best effect, use in a darkened room with a Bubble tube Base, a collar for safety and a Wi-Fi controller for wireless interactivity.

## COMPATIBLE SNOEZELEN® PRODUCTS

---

- 2122002 Snoezelen Bubble Tube Collar, Clear, 8 Inch
- 2140489 Snoezelen Bubble Tube Filling Pump with Power Supply Pump
- 2123508 BCB Water Treatment Fluid, 16.9 Ounces
- Cushioned Platform- See Site for options
- Acrylic Mirror Panels- See site for options
- 2119933 Snoezelen Interactive Controller for Bubble Tubes
- 2121732 Snoezelen Bubble Tube Balls, Set of 15
- 2120147 Snoezelen WiFi Wireless Controller
- 2120277 Snoezelen Mini Play Cube Controller
- 2120037 Snoezelen Color Command Center

## TECHNICAL SPECIFICATION

---

Base height:	11 cm (4¼") 15
Tube Diameter:	20 cm (8")
Base Diameter:	51 cm (20¾")

### Overall Product Height:

2123704 Snoezelen® Balls in Bubble Tube 74¼" (188 cm)

2123703 Snoezelen® Balls in Bubble Tube 84¼" (214 cm)

*Note: please take total height into consideration if requiring a Canopy when your ceiling is low*

Power Supply: Input 230V/110V - Output 12V AC 60W (UL listed – E1494743G58, and meets the requirements of BS EN61558-1 and BS EN61558-2-6)

Power cable: 6' (183 cm) approximately

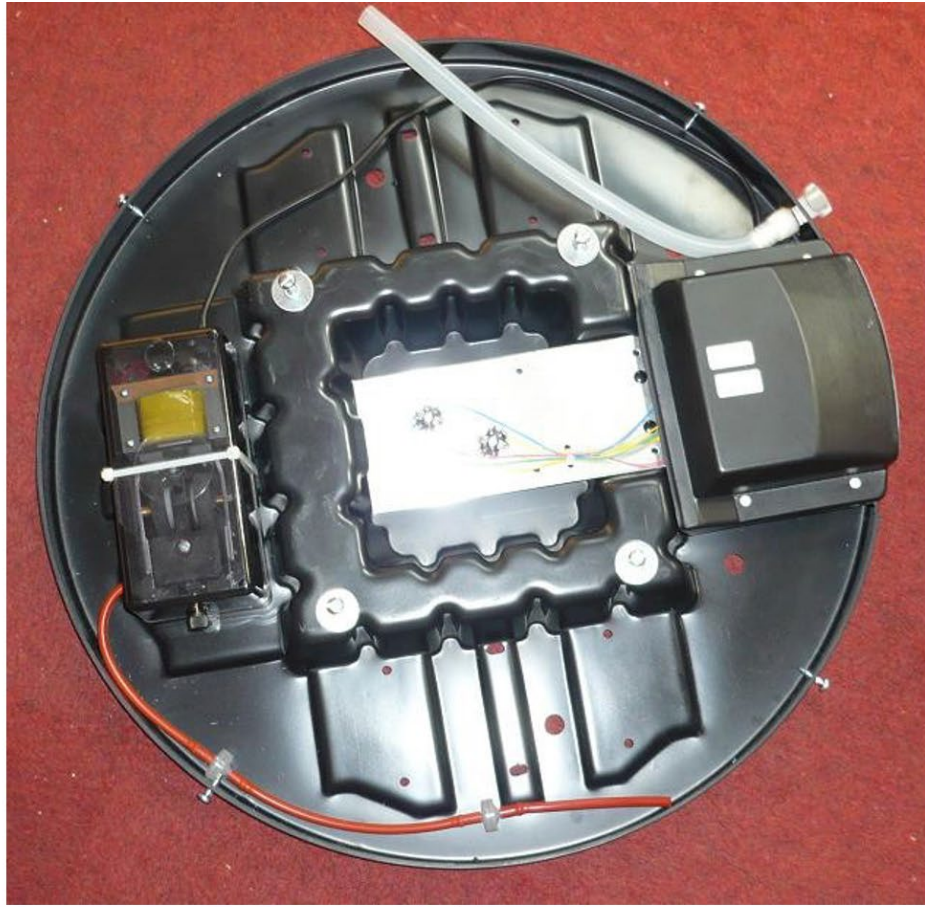
## INSTALLATION

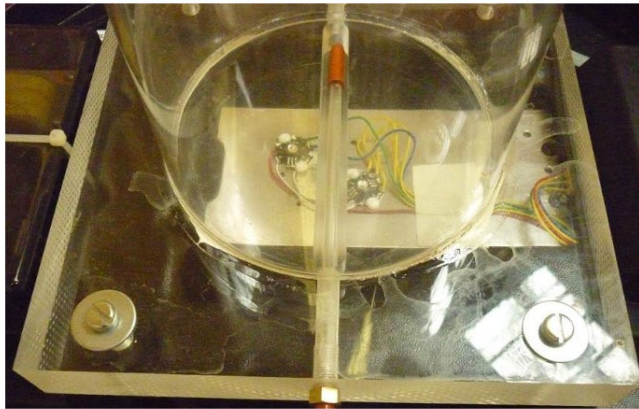
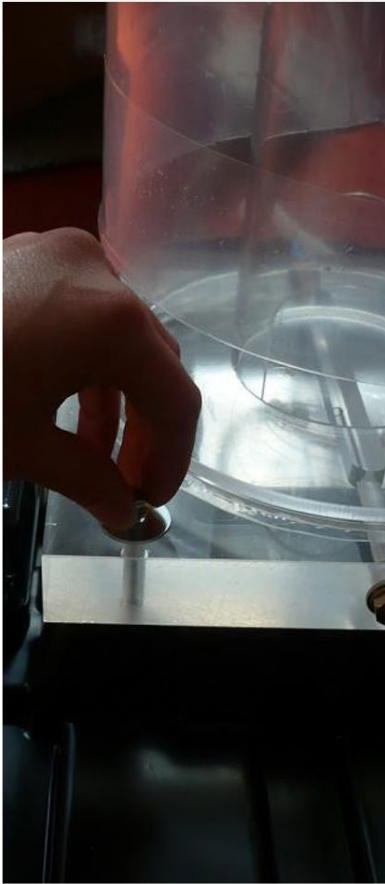
---

1. Place on a flat, stable floor that is capable of holding the weight of this product.
2. Remove the plastic base cover from the base unit. Loosen the four Phillips screws around the perimeter of the base cover, but do not remove them unless you are putting it in a larger Bubble Tube Base over it. The cover is for when the tube is used as a standalone piece. Slide the base cover free of the screws.



3. The bubble tube column needs to be fitted to the base unit using the four screws provided (shown below on top of silver-colored washers). Note the location of the valves before screwing in place – orientate the column so the pipes are near to their corresponding valve. The hoses will not reach if positioned incorrectly. Reminder to remove film from the bottom of the tube before securing in place. See point 5.





4. Slide over and push on the cloudy plastic pipe to the blue valve on the Bubble Tube column completely.



5. Slide over and push on the brown rubber pipe, which is already attached to the pump, to the brass valve at the bottom of the Bubble Tube column.



6. Replace the plastic base cover. If the Bubble Tube is to be used in a Cushioned Platform (padded base), the Base Cover (white plastic cover) may be removed and discarded.
7. Check the lights and pump are working before filling with water. You can feel and hear the pump vibrating. You should also hear air escaping from the open end of the tube. Place the Bubble Tube in its final position, as it cannot be moved when full. The Bubble Tube should now be placed on a stable, level surface in preparation to be filled with distilled water only. If the surface is not flat, the pump is likely to create more noise than a gentle background 'humming'.
8. Fill with clean distilled water carefully until the required level is achieved. This should be approximately 5cm (2 inches) from the top of the tube. The water level will rise when switched on. See Bubble Tube Volumes and Weights guide. We strongly recommend that you use the filling pump (e.g. SNOEZELEN®'s 2140489) to fill the bubble tube from the bottom of the tube, rather than pouring water into the top of the tube. While the components inside the chassis have some protection against spills and splashes, the best way to avoid water accidentally entering the chassis is to fill the bubble tube using the drainage/filling valve. Make sure that the jug or bucket you are using to draw water from is also clean. Put the bubble tube cap (lid) on top of the bubble tube once filled to the desired level.
9. Put the balls into the column.

10. Remove protective plastic film from the Balls in Bubble Tube column.



11. Plug the Power Supply into the POWER IN 12V AC socket of the bubble tube using the jack plug supplied.



12. The green LED light will be lit. The unit will begin to change color, displaying a sequence of colored lights, and bubbles will begin to rise up the tube. Turn the wheel labelled 'SPEED' on the Cover to adjust the speed of the light change.



You may wish to use a collar to secure your bubble tube to the wall. The collar 2122002 is appropriate for these bubble tubes. We recommend the use of a collar to help prevent the Balls in Bubble Tube from being pulled over. Attach your Collar to the wall, to secure the top of the bubble tube.



## CARE & MAINTENANCE

---

- When using distilled water, you may only need to change the water every 6 months to a year. If you notice any sediment or floating pieces in the tube, drain, rinse, and refill with distilled water. Any foreign materials or non-distilled water introduced into the tube well causes algae and bacteria growth. Using BCB Fluid monthly is highly recommended, 2123508.
- The environment the Bubble Tube is in will affect how often the water needs to be changed. Bubble Tubes in dark, damp environments with minimal ventilation will need changing at a different frequency to those in bright, well-ventilated rooms.
- If the bubble tube will be switched off for long periods (summer break), empty the water.
- Failure to clean your bubble tube water and/or use inappropriate water can block the valves of the bubble tube and so encourage product failure.
- Do not add bleach, colored dyes, or salt to the water

### TO EMPTY THE MAXI BALL-BUBBLE TUBE

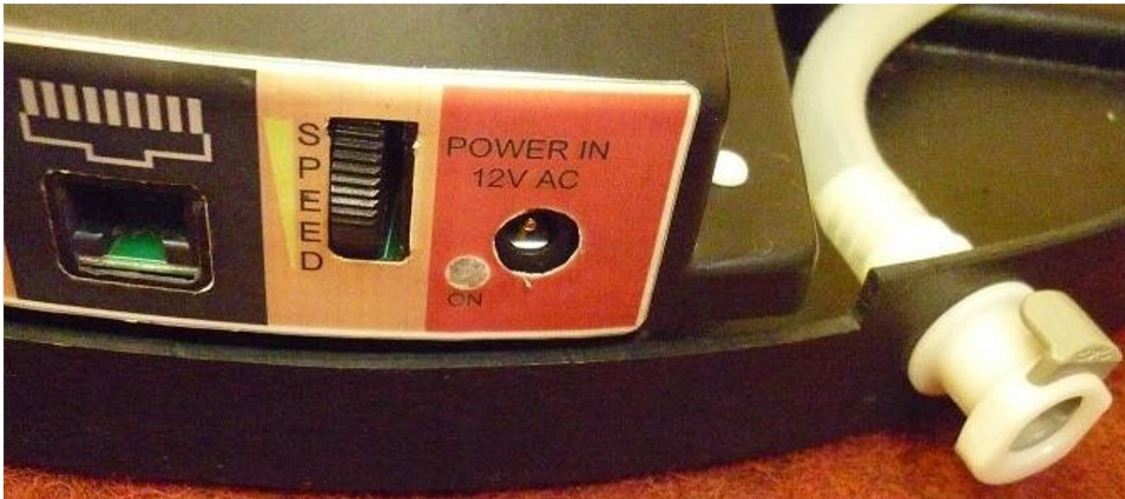
- Use the drainage tube provided (see below).



Connect this tube to the white socket on the bubble tube base, next to the POWER IN socket. Push the end with the black stripe into the white socket till you hear a click to indicate that it is secure. Make sure the other end with the tap is in a suitable container to take the water. Turn the tap to release the water. Only have this plugged into the chassis when you intend to drain the tube. The spigot is not water-tight and will drip when connected.

**REMOVE THE DRAINAGE TUBE AND KEEP IT IN A SAFE PLACE.**

---



To remove the drainage tube, push on the grey button to release the tube.

Removing the drainage tube automatically seals the cloudy pipe of the bubble tube.

Empty any water that has remained in the drainage tube. Keep a piece of paper towel on hand to place under the white socket to catch the small amount of water that can be released.

Disconnecting the drainage tube:





Before using the tap on the drainage tube, make sure you are aware how turning the tap opens and closes the tube:

**OPEN:**

When the tap is closed, you will not be able to see down the tube.

- Alternatively, use an appropriate pump. Remove the cap (round lid at the top of the tube) and remove the water from the top of the tube using your pump. A pump is available separately from SNOEZELEN®: code 20601. This pump can also be used to fill your bubble tube.

### GENERAL CARE

- Wash the exterior of the Maxi Ball-Bubble Tube with a slightly soapy cloth. Wipe excess soap away with a damp cloth. NOTE: Never use solvent based cleaning products, methylated spirits, alcohol wipes or liquid detergents to clean the Maxi Ball-Bubble Tube.

When you need to switch the bubble tube OFF after use, or before maintenance (e.g. before changing the water) please note that:

- There is no ON/OFF switch on the bubble tube itself, or on the power supply shown below.
- Power should be disconnected by removing the mains plug from the wall socket. Do not disconnect the jack plug of the power supply from the round POWER IN 12V AC socket at the base of the bubble tube. Repeatedly disconnecting the jack plug from this round socket is likely to lead to damage to the bubble tube, and should also be avoided for safety reasons.



## TROUBLESHOOTING

---

In the unlikely event of product failure, please check the following:

**Problem: No lights, no bubbles**

- Check that the bubble tube is plugged in at the wall
- Check that the power supply is connected
- Check the green LED light is on
- Use a voltmeter/multimeter to test the power supply output, 12V or 15V. Refer to the label on the power supply.

**Problem: Lights but no bubbles**

- Try switching the bubble tube off and then again
- Check all pipes are firmly connected and free of kinks/bends. Check the pipes have not worked free – occasionally vibrations/transportation can loosen pipes
- Inspect the check valves are pointed in the right directions and are not locked, preventing air flow
- Have you connected an Interactive Switch Box (2119933) to make your Bubble Tube interactive? Is the Switch Box firmly connected? Turn the Switch Box over – is it set to 'Bubbles On'? If it is not, set it to these Bubbles On

**Problem: Super Interactive Switch Box does not work**

- Is the Switch Box firmly connected? Turn the Switch Box over – is it set to 'Bubbles On'? If it is not, set it to this
- If this suggestion does not work, it is possible that the pump has failed. Contact SNOEZELEN® for advice

**Problem: The bubble tube is very noisy**

- Make sure that the bubble tube is on a completely flat and stable surface, and not on a slope or uneven surface
- Make sure that the pump is still securely attached inside the chassis and that it has not worked free of the supports that hold it down

**Problem: The bubble tube is leaking**

- Fill and drain the bubble tube using the drainage tube and the valve with the grey button on the chassis – water can be accidentally spilled when filling the tube via the top
- Make sure that all the tubing inside the bubble tube base is securely attached
- Place paper towels in the chassis to identify exactly where the leak is coming from
- Contact us for advice once the exact location of the leak has been found

- If leaking at the drain or air fitting (blue and brass fittings), are they loose? Tighten fittings but do not overtighten as you can strip the threads.
- Is there an adequate amount of plumber's tape applied? You'll be able to see white tape wrapped around the threads. If not, drain tube and remove fittings. Apply more plumbers tape and replace snugging fitting tight. Refill with distilled water

**Problem: There is debris inside the bubble tube**

- Remove debris from the tube, drain and refill with distilled water
- Use the a lid for the bubble tube column to stop dust, lint etc. from falling into the tube
- Make sure no beads from the polystyrene packaging have fallen into the tube
- Keep the water clean by organizing a regular cleaning schedule to avoid the growth of algae. Use BCB Fluid monthly to keep the water clean.

## BUBBLE TUBE VOLUMES & WEIGHTS

---

$$V = \pi r^2 h$$

Must convert measurements into metric first.

1L of Water in Volume = 1kg of Water in Weight  
 1 Gallon of Water in Volume = 8.345 lbs. of Water in Weight

**Balls in Bubble Tube 8" Lid**

70" (175 cm) V=55 L (14.53 gal)

80" (200 cm) V=62.8L (16.59 gal)