



Pouch Laminator

Item# 2049682



Pouch Exit Tray



Power Switch



General Safeguards

- Place machine on a stable surface.
- DO NOT use laminator if its power cord is damaged.
- Only run a lamination job when Ready Light turns green.
- Ensure that lamination runs without metal objects like staples or paper clips.
- DO NOT attempt to open or otherwise repair the machine.
- Keep the machine, including its power cord, away from heat and water sources.
- DO NOT allow children to use this machine.
- Turn off the machine after each use.
- Unplug the machine when not in use for an extended period of time.
- DO NOT laminate an empty pouch.
- Use pouches required for the appropriate pouch setting.
- Follow the instructions and specifications on this sheet and on the machine.
- Leave the Pouch Exit Tray clear of any objects.

Specification/Technical Data

Max. laminating width	12 "
Laminating pouch thickness	3mil - 7ml
Laminating speed	16 ½" per minute
Pouch jam recovery	Yes
Cold Laminating	Yes
Warm-up time	1 minute
Auto shut-off time	30 minutes
Power	110V/60HZ, 750W
Dimensions	18 ½" x 5 ¾" x 4 7/8"
Net weight	7.2 lbs.

Helpful Tips

- Run a plain paper board (about 180gsm - 250gsm) through the machine to clean rollers.
- Machine will shut off automatically if left on stand-by for 30 minutes.
- Allow machine to cool completely before storing.

To Help Avoid Jams

- Follow the right document/pouch insert direction.
- Only run a lamination job within the Border Mark.
- Only run a lamination job when Ready Light turns green.
- Only run a lamination job at the correct Pouch setting.
- Check there is enough clear space (min. 500mm, 20") behind the machine.

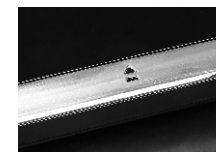
Hot Lamination Operation:



1) Turn on the Power Switch and press the On/Off Button.



2) Press the appropriate Pouch Size Button, based on the pouch used.
For cold lamination, press the Cold Button



3) Machine is ready to start laminating when the Ready Light is green and the machine makes a beeping sound.



4) Place document in proper pouch. Insert pouch, sealed edge first, into Pouch Entry.



5) Remove finished lamination from Pouch Exit Tray at the back of the machine.



6) In case of pouch jam, press the Reverse Button. When the machine starts beeping, gently pull the jammed lamination from the Pouch entry.



7) To turn off the machine, Press the On/Off Button and turn off Power Switch.