



# An Adventure Setting

## Storytelling Adventures



**RESPOND** to the *Bluey* episode or the book *Bluey: The Creek* where the characters explore an outdoor setting. Why do Bluey and her family go to the creek? What surprises, excites, and concerns them in this setting?



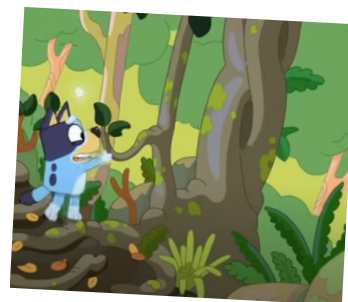
**CONNECT** how illustrators and animators contribute to a story by providing important information about where the characters are and how that place influences the plot. An illustration usually includes information about the characters, setting, and plot.



**CREATE** a sketch that includes the setting, characters, and some action that illustrates the plot. You might draw Bluey's family hiking towards the creek. Or you might illustrate a setting where your family is exploring a park or a creek in your neighborhood. Your art could focus on any place that you've seen in an episode of *Bluey*, read about in a *Bluey* book, a memory about a place you have been, or a description of a location you'd like to visit.



Mayah B.



Annajulia R.Q.



**PRESENT** your art to family or friends and be a storyteller as you discuss this adventure. Describe the characters and the setting they are in. What action does the picture show, and what might the characters do next?



This book is based on the TV series *Bluey*.

BLUEY™ and BLUEY™ character logos™ and ©Ludo Studio Pty Ltd 2018, Licensed by BBC Studios. BBC logo™ & ©BBC 1996.



Penguin  
Young  
Readers

For more information about Bluey, head over to <https://www.bluey.tv/>

*Bluey: The Creek* was published in Australia in 2020 by Puffin Books and published in the United States in 2020 by Penguin Young Readers Licenses, an imprint of Penguin Random House LLC, New York.



Learning

Color Inspires Creativity  
Thinking Sheet

©2025 Crayola

**Note for teachers and parents:**  
For more creative inspiration and hands-on explorations go to [Crayola.com/CreativityWeek](https://Crayola.com/CreativityWeek). To share student artwork on social media please post using #CrayolaCreativityWeek