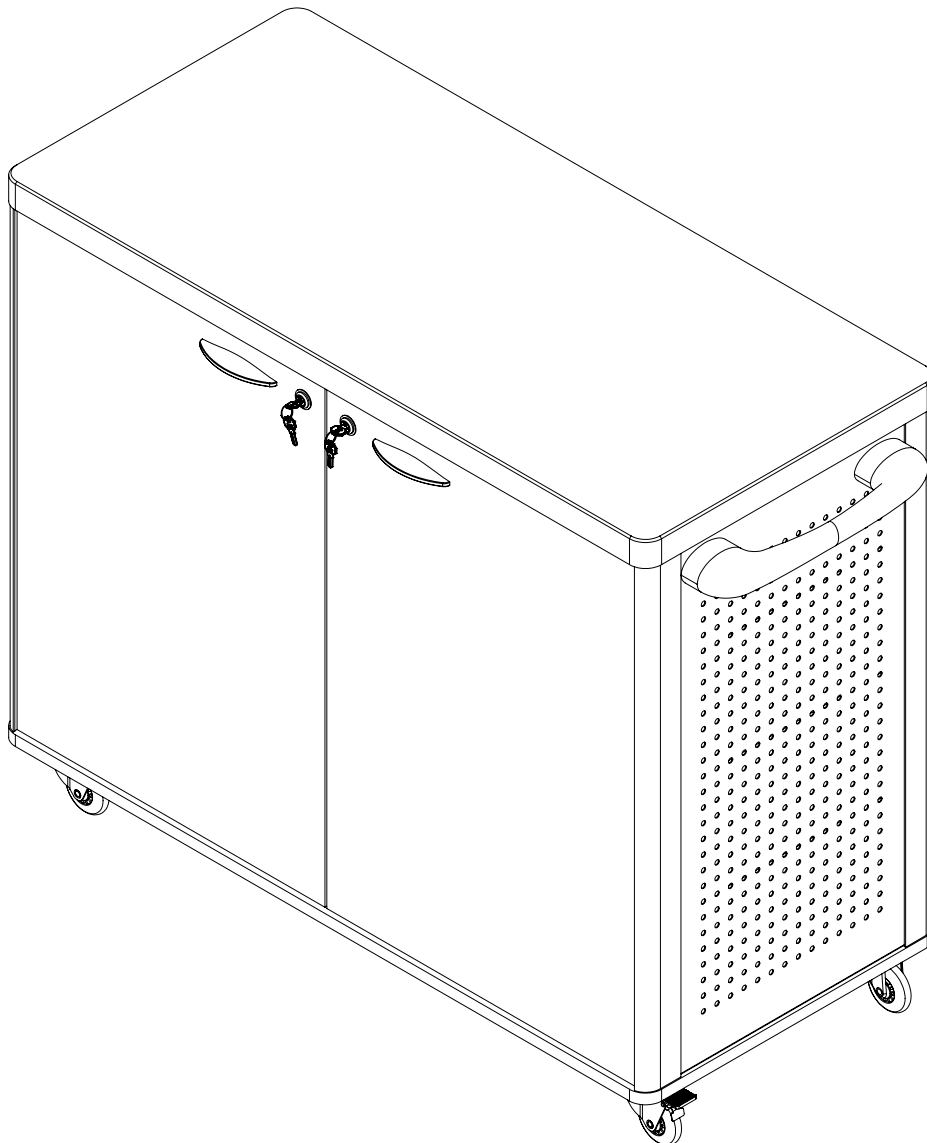


# Classroom Select® Makerspace Mobile Cart

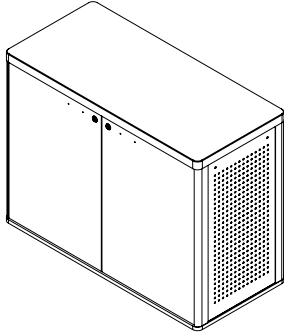
## ASSEMBLY INSTRUCTIONS

Thank you for purchasing Classroom Select® Makerspace Mobile Cart from School Specialty®. Please review the enclosed packing list to ensure all components are included and read the instructions carefully before you begin assembly. If you find anything missing or have any questions now or after set-up, please contact Customer Care at 888.388.3224 or [customer care.schoolspecialty.com/contact-us-email](mailto:customer care.schoolspecialty.com/contact-us-email).

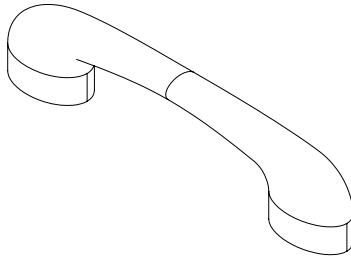


## PART AND TOOL LIST

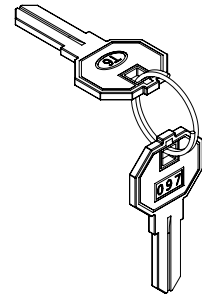
---



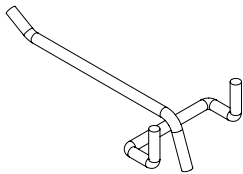
Cart  
Quantity: 1



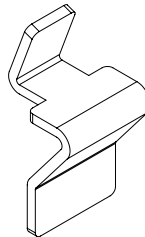
Makerspace Handle  
Quantity: 1



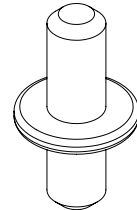
Keys  
Quantity: 2



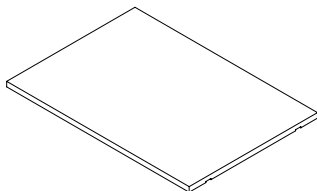
Hook  
Quantity: 10



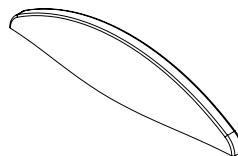
Shelf Holder  
Quantity: 12



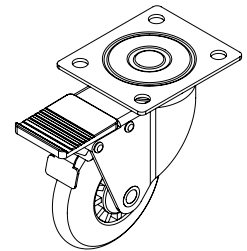
Shelf Pin  
Quantity: 12



Shelf  
Quantity: 6



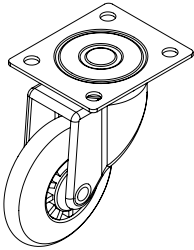
Door Handle  
Quantity: 2



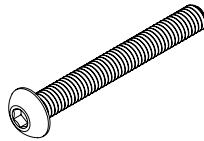
Locking Casters  
Quantity: 2

## PART AND TOOL LIST

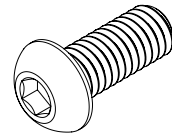
---



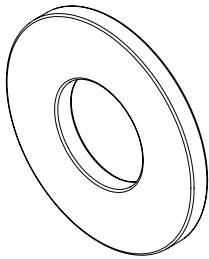
Casters  
Quantity: 2



M3x25mm Socket Screw  
Quantity: 4



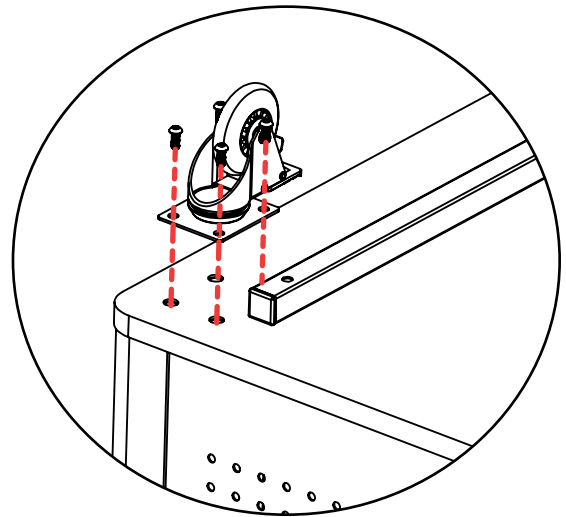
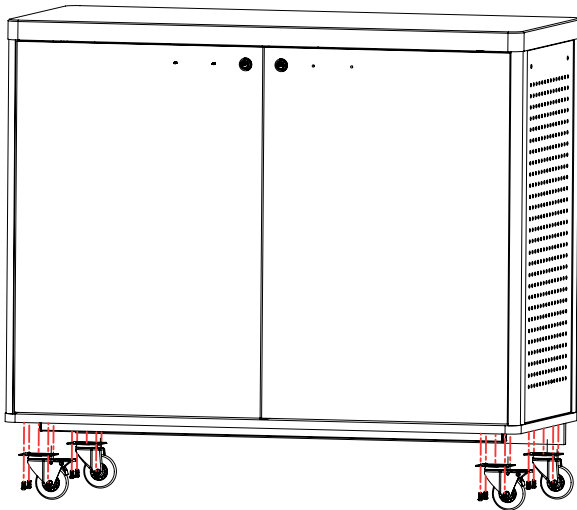
M6x15mm Socket Screw  
Quantity: 18



Washer  
Quantity: 4

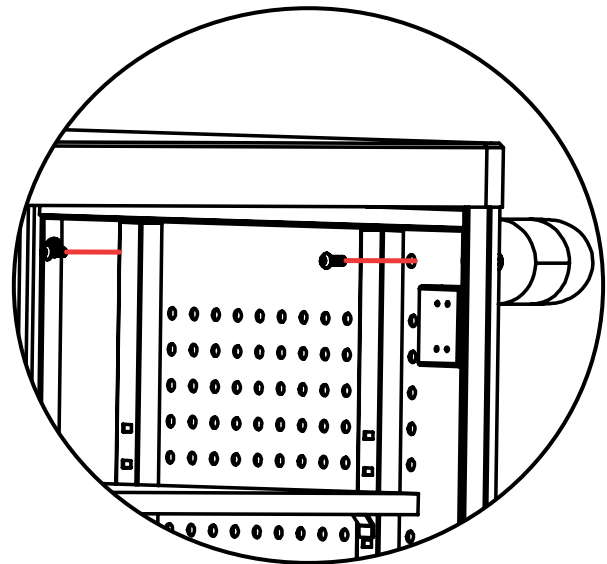
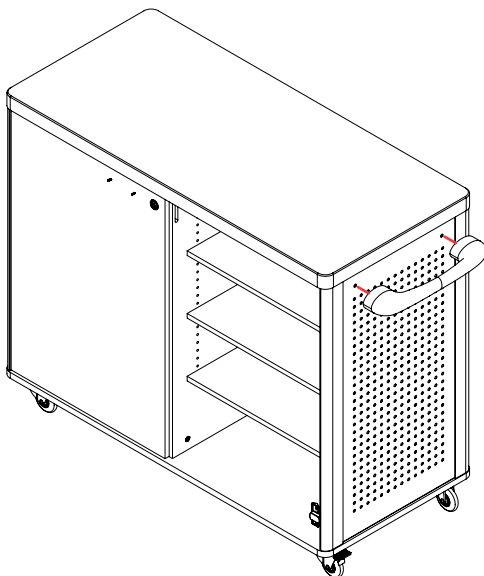
## STEP 1

Place the Cart face down on a flat surface. Place the Locking Casters over the holes on the side closest to the Cart doors. Attach each Locking Caster with four M6x15mm Socket Screws each. Place the non-locking Casters over the remaining holes. Attach each non-locking Caster with four M6x15mm Socket Screws each.



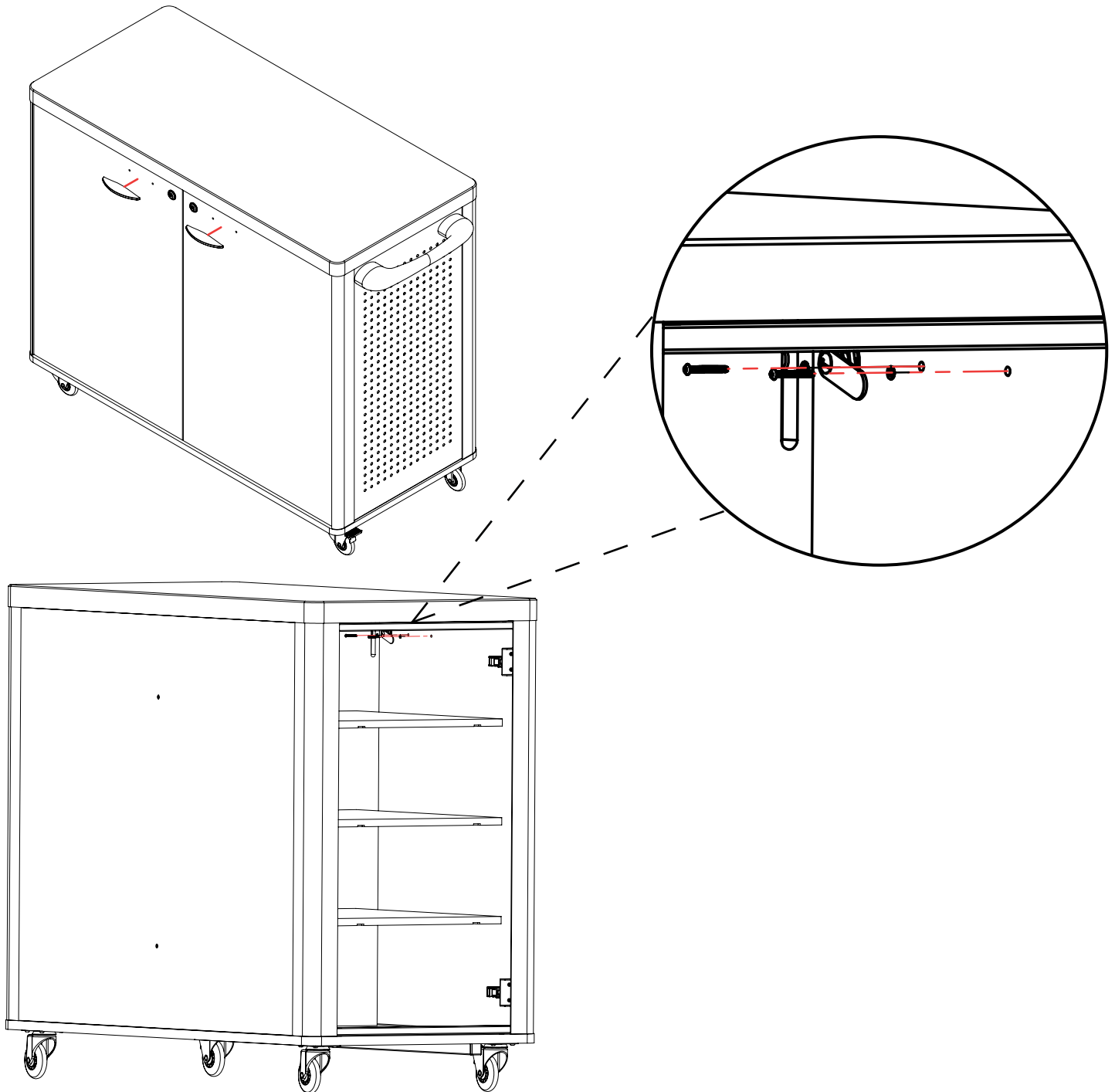
## STEP 2

Locate the two holes on the right side of the cart. Here, attach the Makerspace Handle with two M6x15mm Socket Screws.



## STEP 3

Place a washer on each of the M3x25mm Socket Screws. Locate the two holes on the front of each door. Here, attach each Door Handle with two M3x25mm Socket Screws.



## DISCLAIMERS

---

Please review the enclosed packing list to ensure all components are included. Please read the instructions carefully before you begin assembly. If you find anything missing or have any questions now or after set-up, please contact Customer Care at 888.388.3224 or [customercare.schoolspecialty.com/contact-us-email](mailto:customercare.schoolspecialty.com/contact-us-email).

Heavy or large furniture may require two or more people for proper assembly. Improper assembly may void the warranty. Ensure all hardware is correctly installed and screws are fully tightened before use. Recheck and tighten screws at least once per year. Failure to assemble or secure parts properly may result in product failure or personal injury.

The products illustrated/photographed in this assembly instruction may vary slightly from the actual product.

**Product Warranty:** [help.schoolspecialty.com/s/article/Product-Warranties](https://help.schoolspecialty.com/s/article/Product-Warranties)