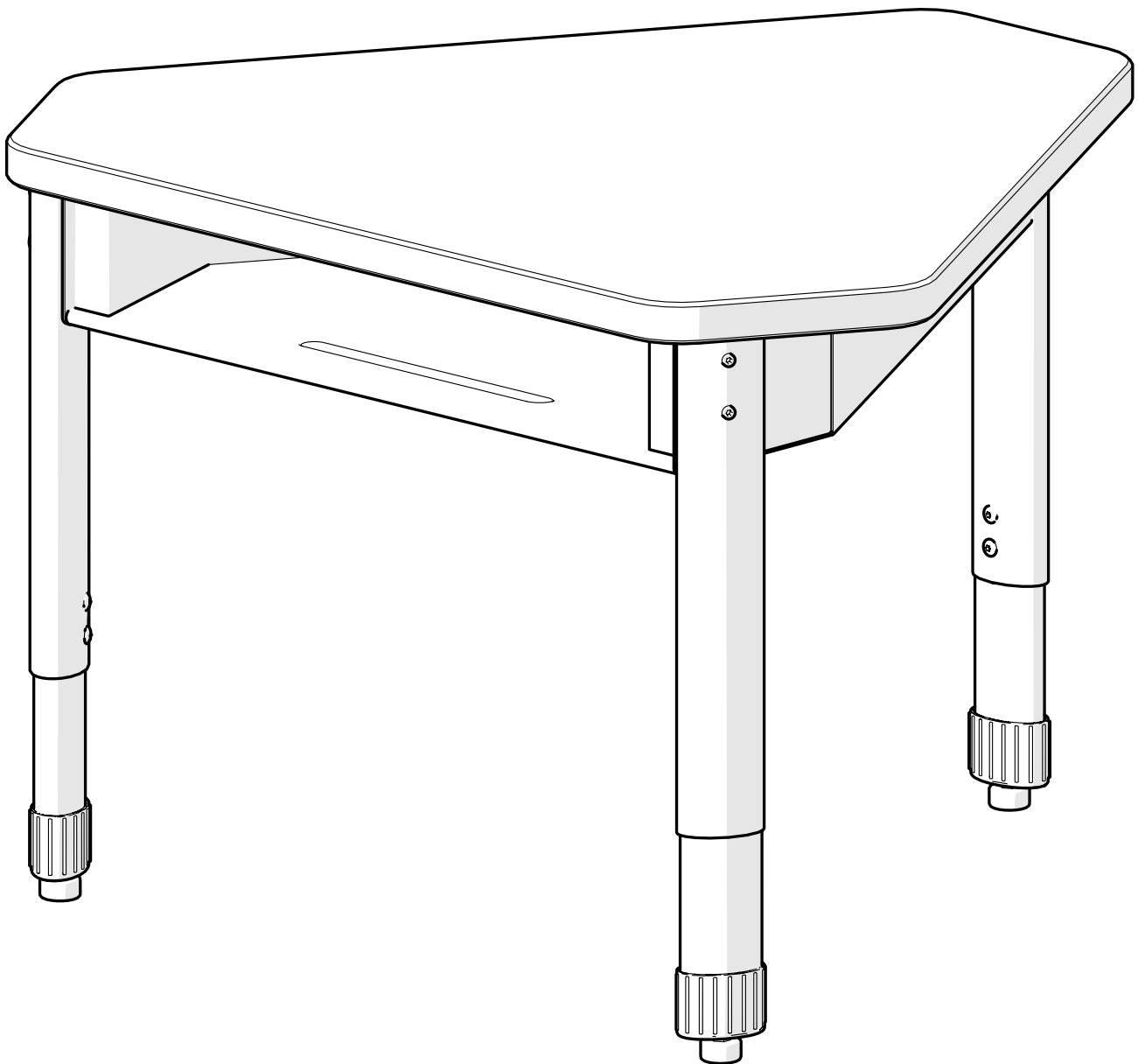


Classroom Select[®] Concord Desk

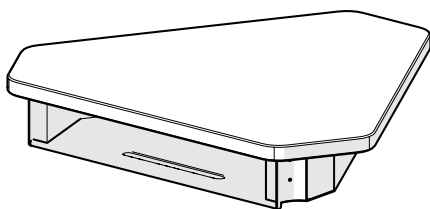
ASSEMBLY INSTRUCTIONS

Thank you for purchasing Classroom Select[®] Concord Desk from School Specialty[®] enclosed packing list to ensure all components are included and read the instructions carefully before you begin assembly. If you find anything missing or have any questions now or after set-up, please contact Customer Care at 888.388.3224 or customer care.schoolspecialty.com/contact-us-email.

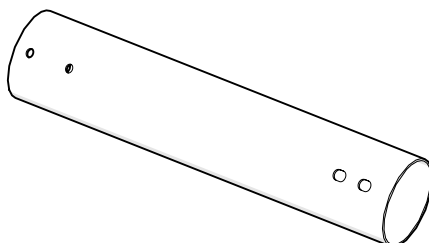
Disclaimer: These instructions are for the concord desk with bookbox, but also work for the study top offered by School Specialty[®].



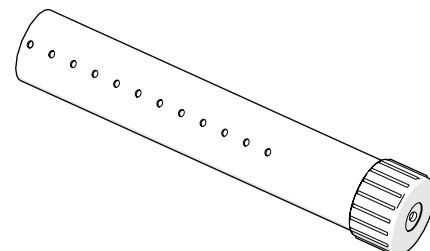
PART AND TOOL LIST



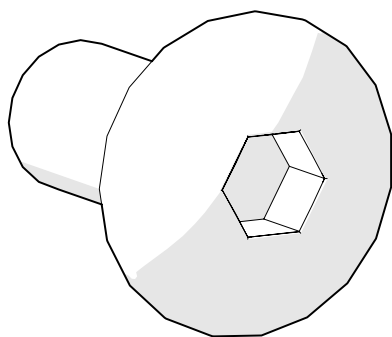
Desk Top
Quantity: 1



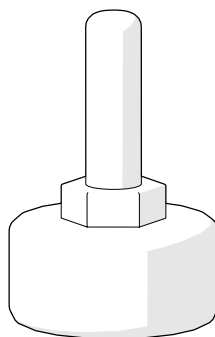
Leg Receivers
Quantity: 3



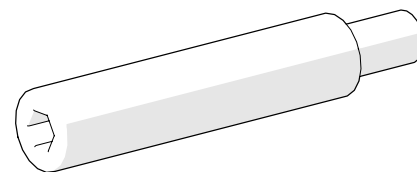
Leg Inserts
Quantity: 3



Height Adjustment Screws
Quantity: 6



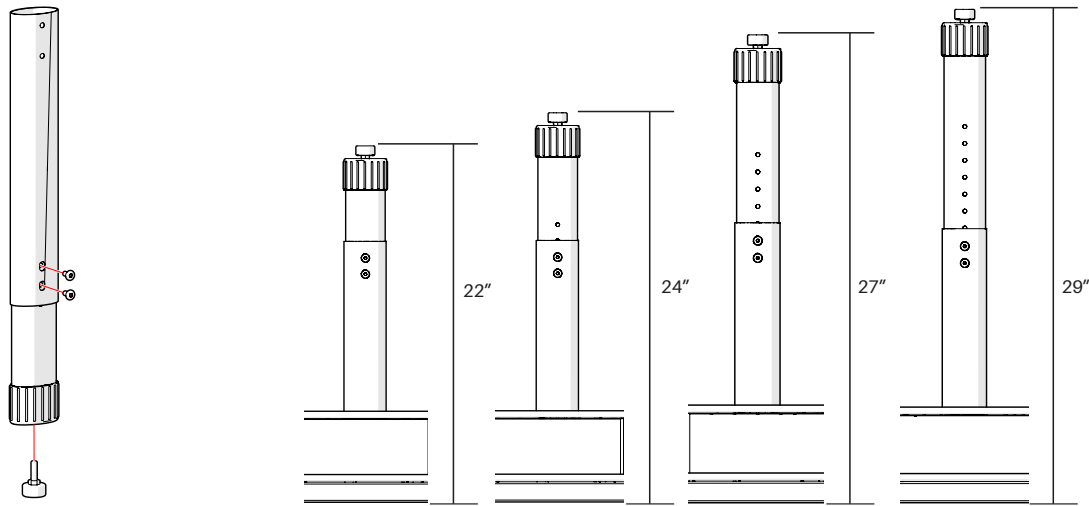
Glides
Quantity: 3



Leg Screws
Quantity: 6

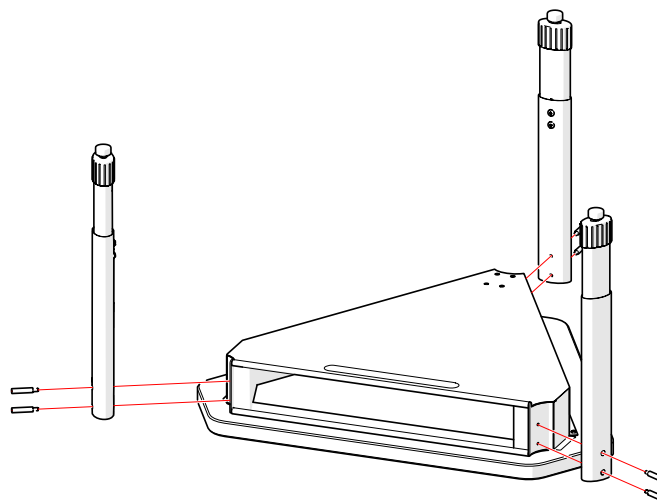
STEP 1

Assemble leg inserts and receivers using two height adjustment screws on each leg. Hand tighten the height adjustable screws, for the best results. Screw the glides into the leg inserts.



STEP 2

Place the table top upside down on a stable, non-abrasive soft surface to avoid any scratching. Attach Leg assemblies to the Desk Top using the two Leg Screws each.



DISCLAIMERS

Please review the enclosed packing list to ensure all components are included. Please read the instructions carefully before you begin assembly. If you find anything missing or have any questions now or after set-up, please contact Customer Care at 888.388.3224 or customercare.schoolspecialty.com/contact-us-email.

Heavy or large furniture may require two or more people for proper assembly. Improper assembly may void the warranty. Ensure all hardware is correctly installed and screws are fully tightened before use. Recheck and tighten screws at least once per year. Failure to assemble or secure parts properly may result in product failure or personal injury.

The products illustrated/photographed in this assembly instruction may vary slightly from the actual product.

Product Warranty: help.schoolspecialty.com/s/article/Product-Warranties