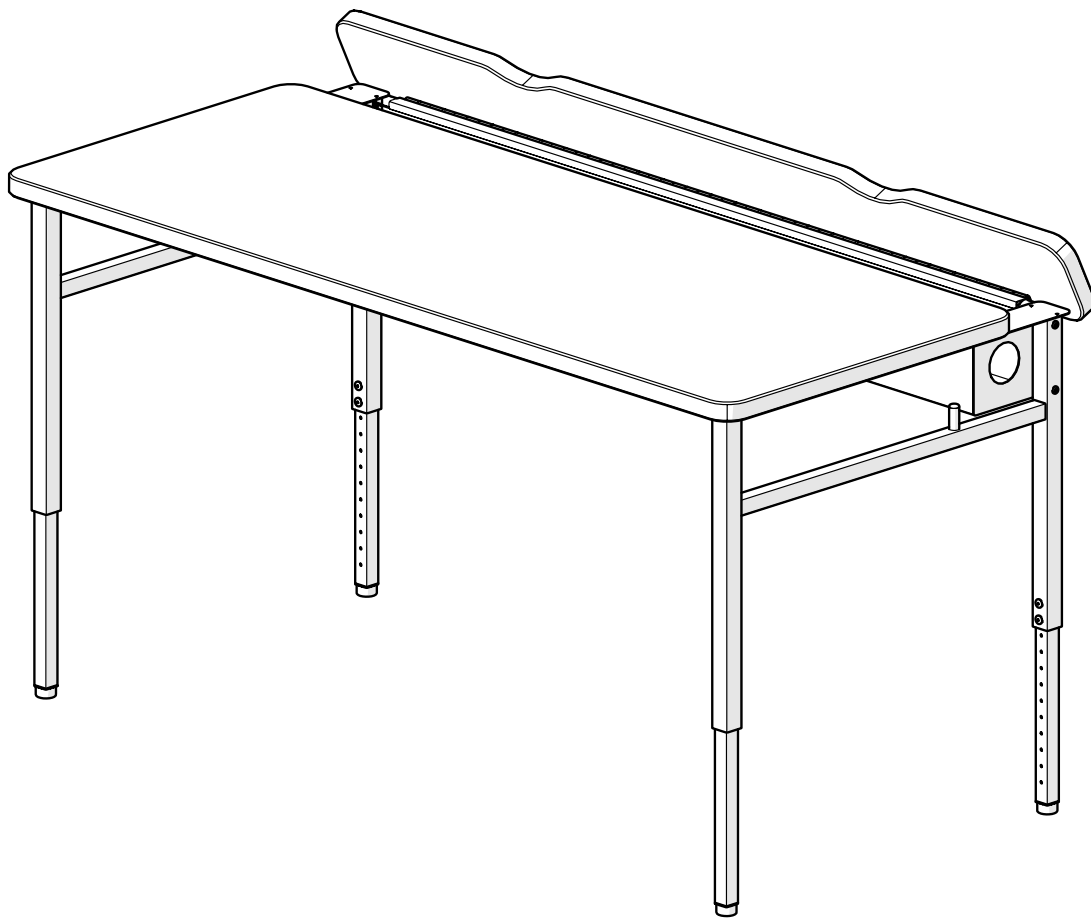


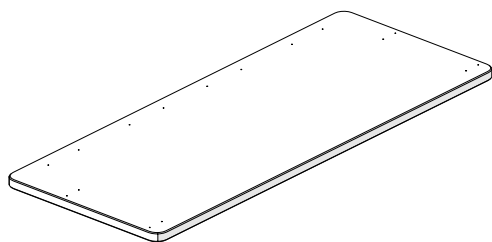
Classroom Select® Advocate Series® Computer Table

ASSEMBLY INSTRUCTIONS

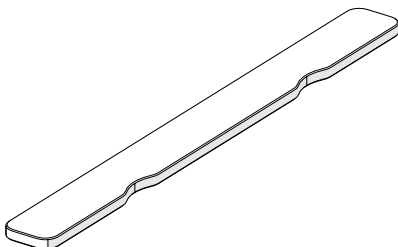
Thank you for purchasing the Classroom Select® Advocate Series® Computer Table from School Specialty®. Please review the enclosed packing list to ensure all components are included and read the instructions carefully before you begin assembly. If you find anything missing or have any questions now or after set-up, please contact Customer Care at 888.388.3224 or customer care.schoolspecialty.com/contact-us-email.



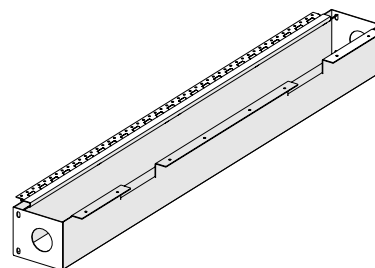
PART AND TOOL LIST



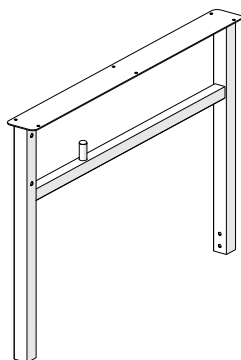
Large Top
Quantity: 1



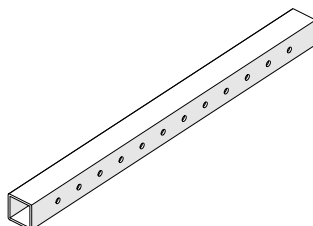
Small Top
Quantity: 1



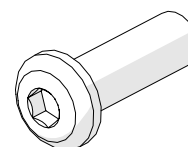
Cable Trough
Quantity: 1



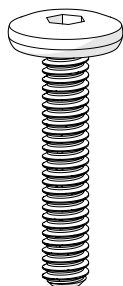
Leg Receiver
Quantity: 2



Leg Insert
Quantity: 4



Barrel Nut
Quantity: 4



M6 x 28mm
Quantity: 4

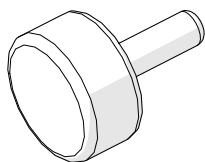


M6 x 12mm
Quantity: 8

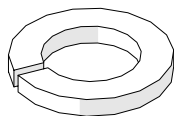


#10 x 1" Wood
Quantity: 25

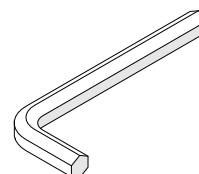
PART AND TOOL LIST



Glide
Quantity: 4



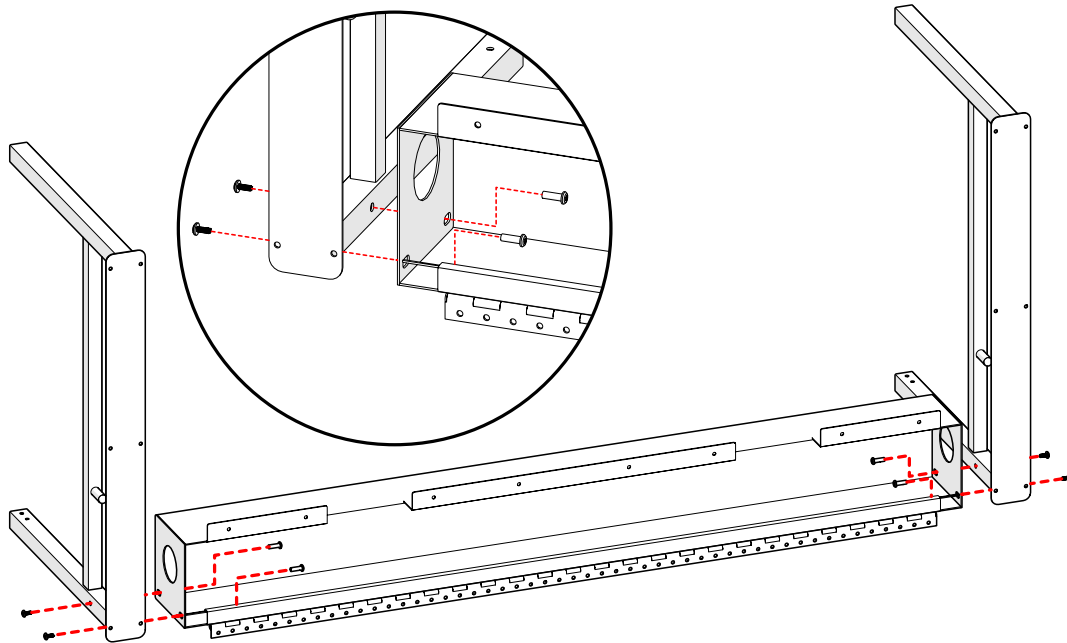
Lock Washer
Quantity: 8



Allen Wrench
Quantity: 2

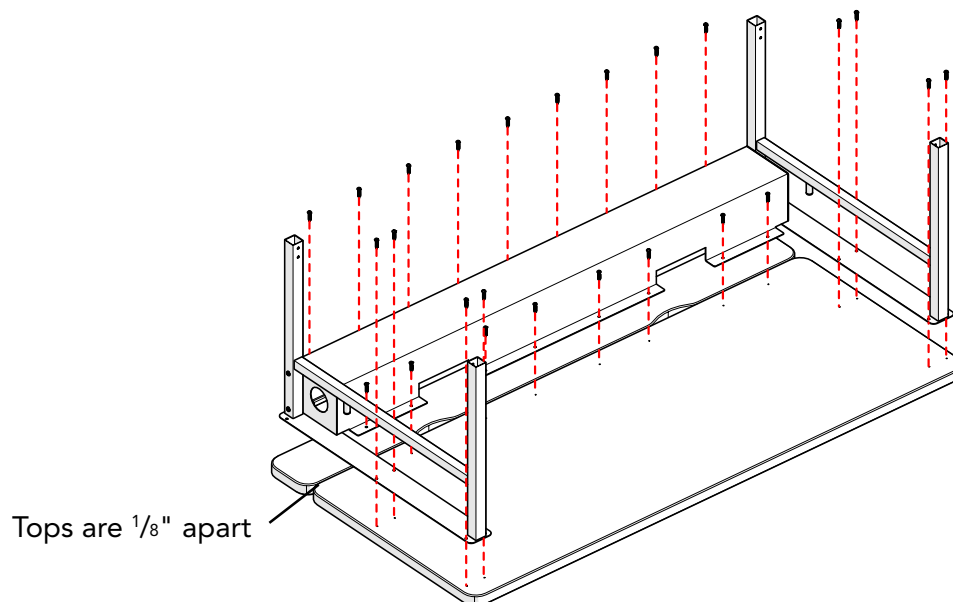
STEP 1

Align Leg Receivers with holes in sides of Cable Trough in orientation shown. Insert Barrel Nuts from inside of Cable Trough and 28mm allen screws through Leg Receiver, tightening into Barrel Nuts.



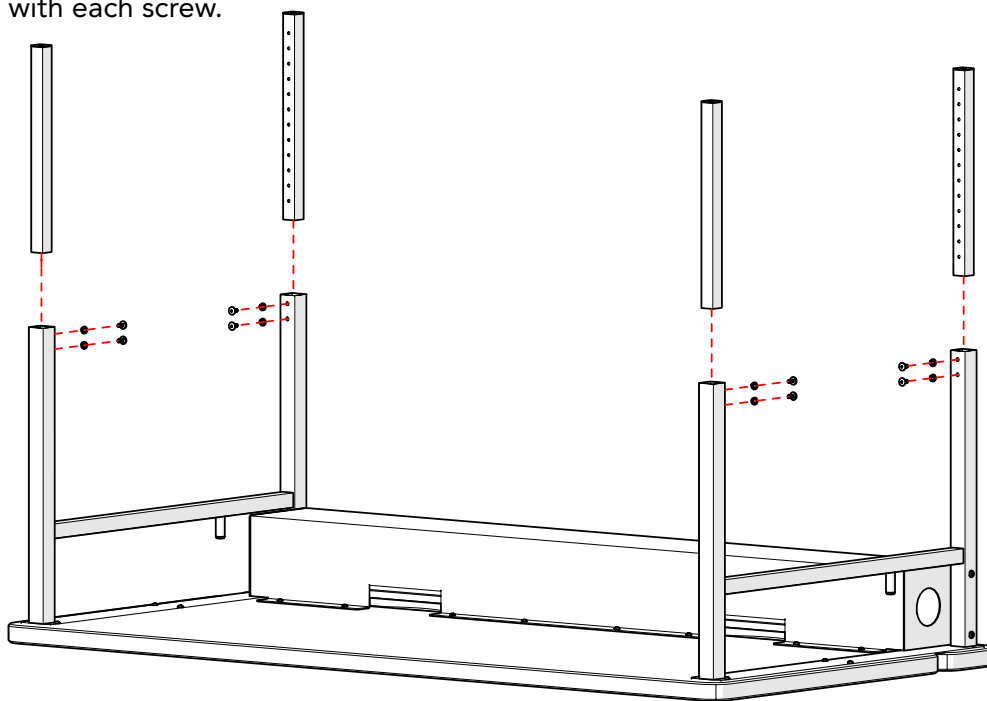
STEP 2

Place the top upside down on a stable, non-abrasive soft surface to avoid any scratching. Position Large Top and Small Top about $\frac{1}{8}$ " apart on a flat surface. Align Leg Receivers and Cable Trough with pre-drilled holes on Large Top and Small Top. Attach Cable Trough and Leg Receivers to Large Top with wood screws. Attach Cable Trough hinge to Small Top with wood screws, spaced every-other screw hole. Note that Leg Receiver should not be screwed into Small Top so some screw holes will not receive screws.



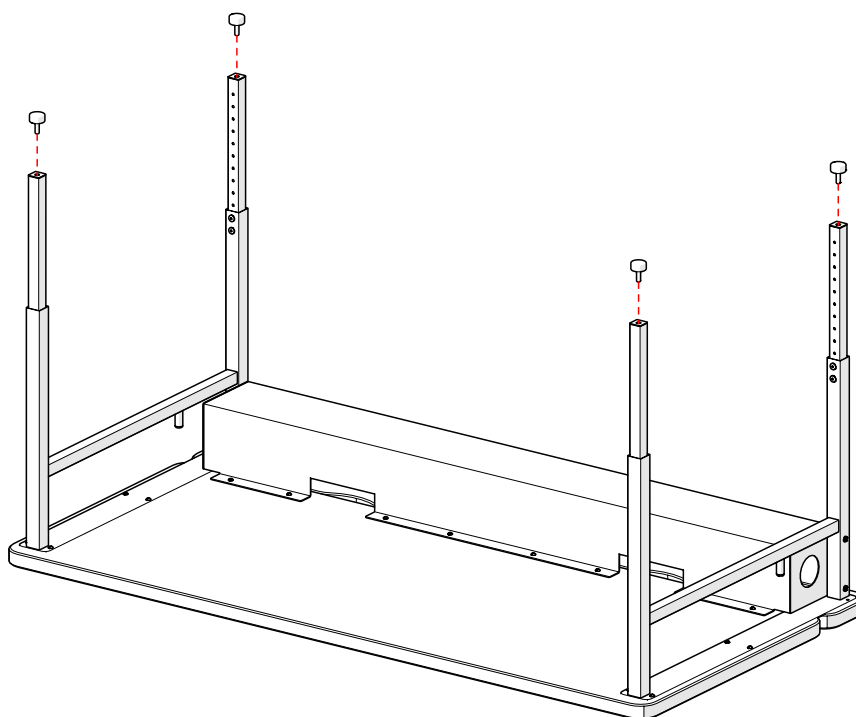
STEP 3

Add Leg Inserts to each Leg Receiver. Set at desired height and secure in place with 12mm screws including a Lock Washer with each screw.



STEP 4

Screw threaded Glides into Leg Inserts.



DISCLAIMERS

Please review the enclosed packing list to ensure all components are included. Please read the instructions carefully before you begin assembly. If you find anything missing or have any questions now or after set-up, please contact Customer Care at 888.388.3224 or customercare.schoolspecialty.com/contact-us-email.

Heavy or large furniture may require two or more people for proper assembly. Improper assembly may void the warranty. Ensure all hardware is correctly installed and screws are fully tightened before use. Recheck and tighten screws at least once per year. Failure to assemble or secure parts properly may result in product failure or personal injury.

The products illustrated/photographed in this assembly instruction may vary slightly from the actual product.

Product Warranty: help.schoolspecialty.com/s/article/Product-Warranties