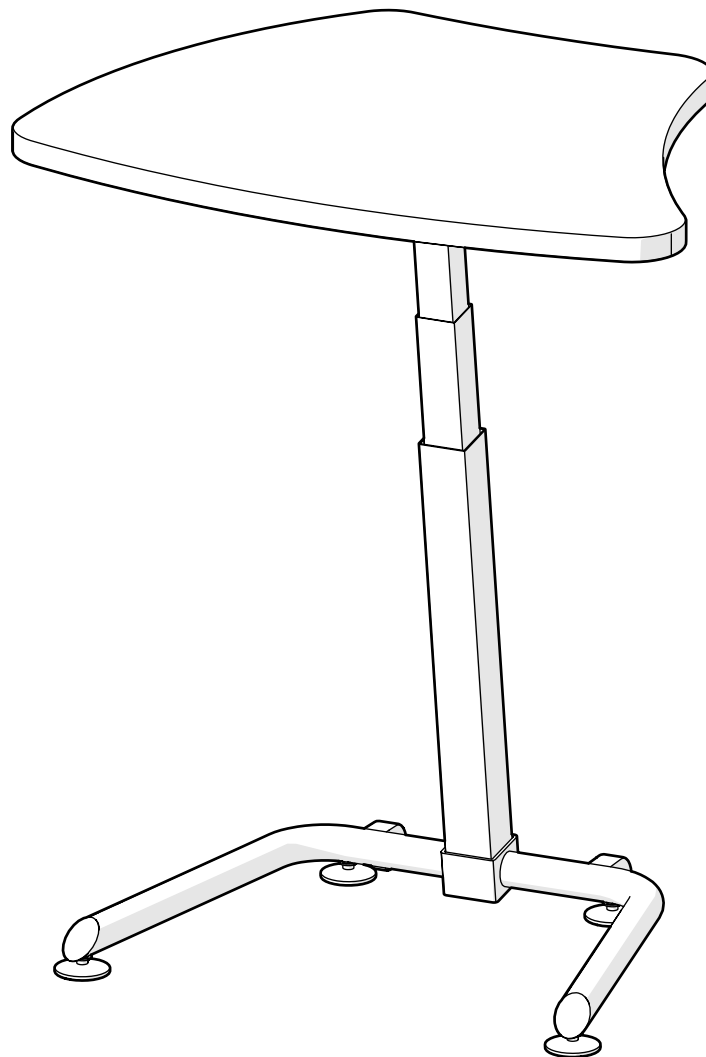


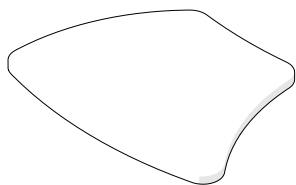
Classroom Select[®] Height Adjustable Sit/Stand Desk

ASSEMBLY INSTRUCTIONS

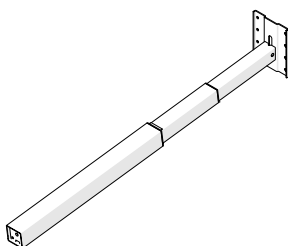
Thank you for purchasing Classroom Select[®] Height Adjustable Sit/Stand Desk from School Specialty[®]. Please review the enclosed packing list to ensure all components are included and read the instructions carefully before you begin assembly. If you find anything missing or have any questions now or after set-up, please contact Customer Care at 888.388.3224 or customer care.schoolspecialty.com/contact-us-email.



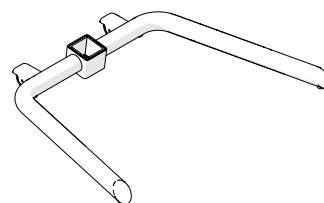
PART AND TOOL LIST



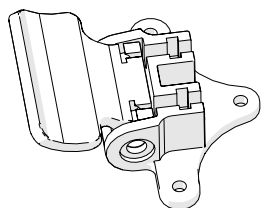
Top Panel
Quantity: 1



Pneumatic Post
Quantity: 1



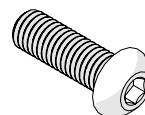
Base
Quantity: 1



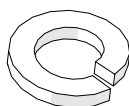
Handle
Quantity: 1



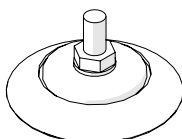
No 10 x 1"
Quantity: 12



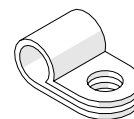
M8 x 25mm
Quantity: 4



Lock Washer
Quantity: 4



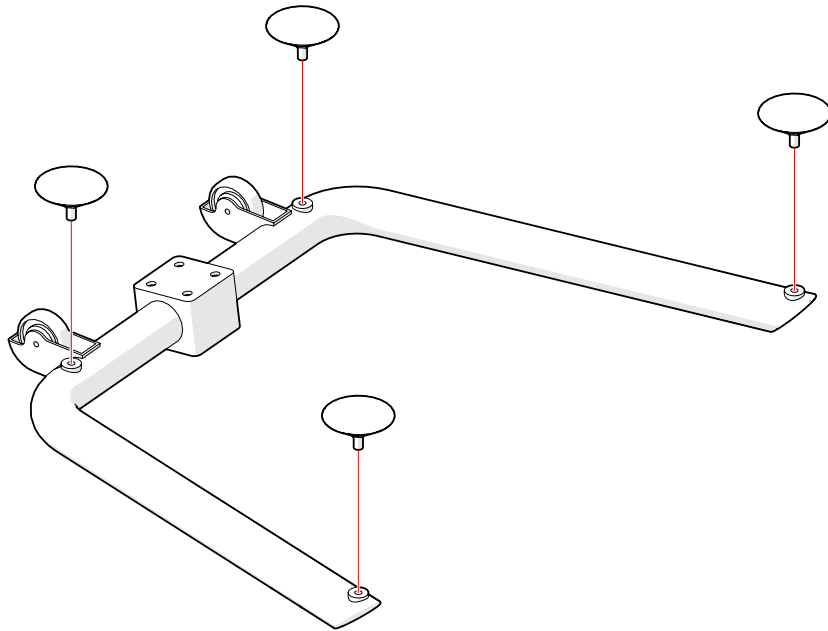
Glide
Quantity: 4



Cable Tie
Quantity: 1

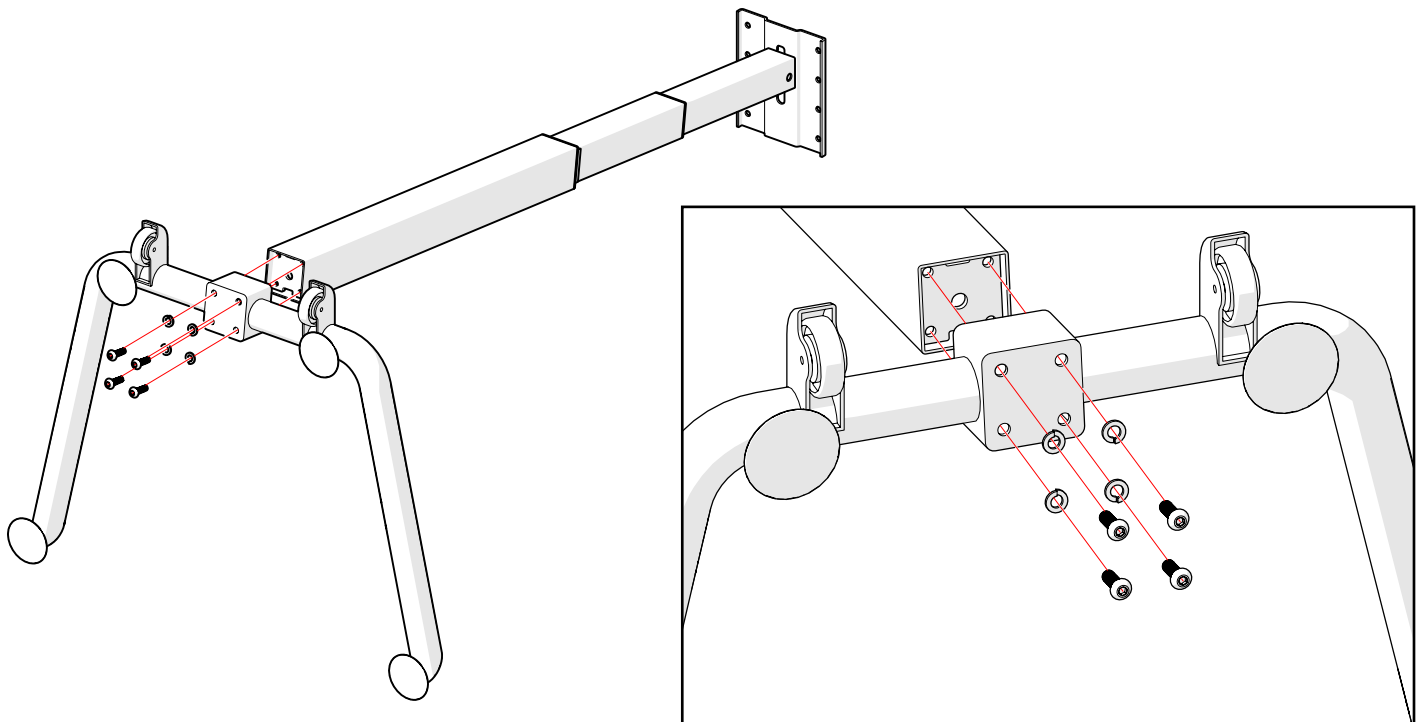
STEP 1

Screw four threaded glides into base.



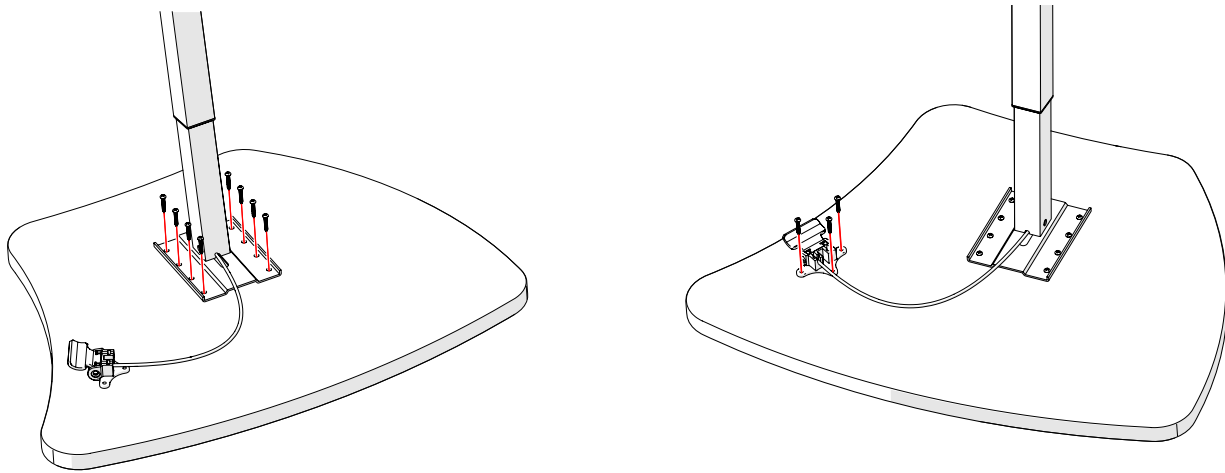
STEP 2

Using four M8 x 25mm screws and lock washers, secure base to pneumatic post as shown.



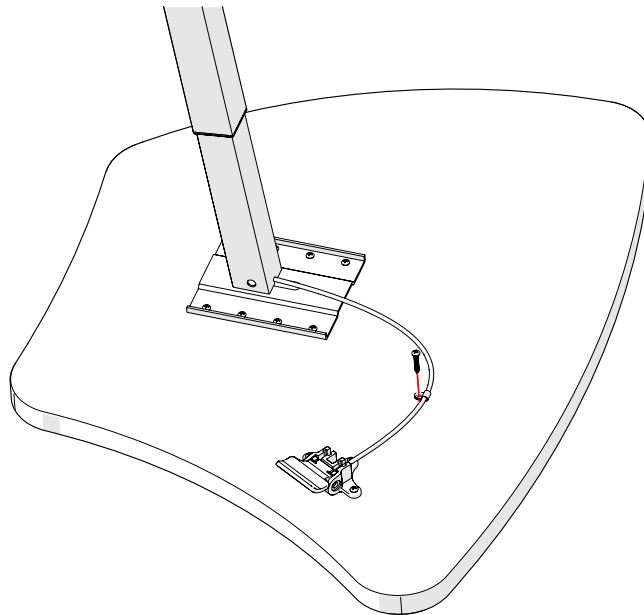
STEP 3

Place the top upside down on a stable, non-abrasive soft surface to avoid any scratching. Using No. 10 x 1" screws, secure the pneumatic post and handle to the top panel.



STEP 4

Secure cable using cable tie and remaining No. 10 x 1" screw.



DISCLAIMERS

Please review the enclosed packing list to ensure all components are included. Please read the instructions carefully before you begin assembly. If you find anything missing or have any questions now or after set-up, please contact Customer Care at 888.388.3224 or customercare.schoolspecialty.com/contact-us-email.

Heavy or large furniture may require two or more people for proper assembly. Improper assembly may void the warranty. Ensure all hardware is correctly installed and screws are fully tightened before use. Recheck and tighten screws at least once per year. Failure to assemble or secure parts properly may result in product failure or personal injury.

The products illustrated/photographed in this assembly instruction may vary slightly from the actual product.

Product Warranty: help.schoolspecialty.com/s/article/Product-Warranties